

# VILLAGE OF ALANSON EMMET COUNTY, MICHIGAN

IN COOPERATION WITH THE  
MICHIGAN DEPARTMENT OF TRANSPORTATION  
AND THE  
FEDERAL HIGHWAY ADMINISTRATION

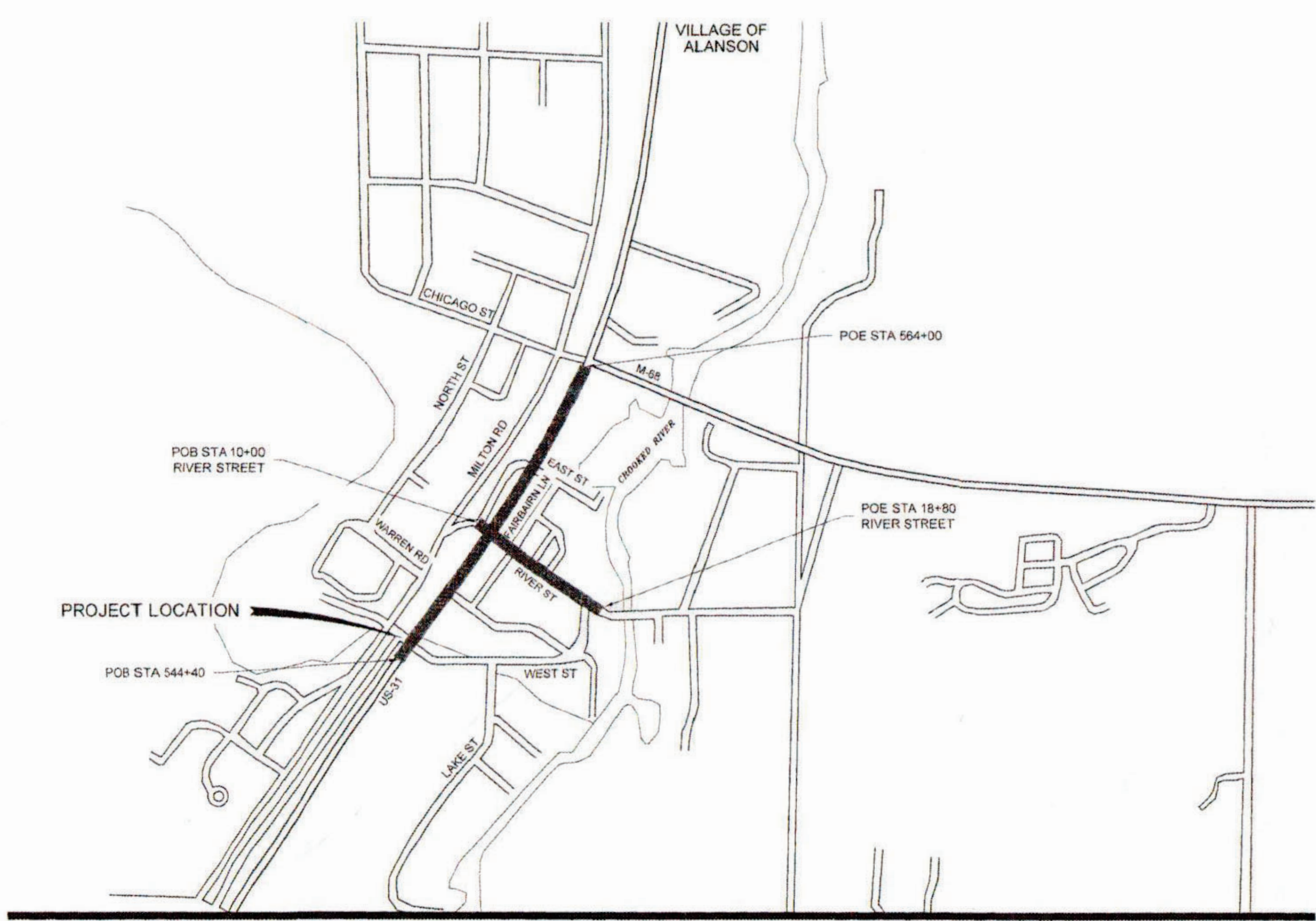
## US-31 & RIVER STREET ENHANCEMENT IMPROVEMENTS

APRIL 2023

JOB NO.: 218375  
CONTROL SECTION NO.: 24011  
TA: 2021034.01

**INDEX OF DRAWINGS**

DESCRIPTION	SHEET NO.
COVER SHEET	G-001
CROSS SECTIONS	C-101 - C-102
US-31 IMPROVEMENTS	C-103 - C-105
RIVER STREET IMPROVEMENTS	C-106
DETAILS	C-501 - C-502



**STANDARD PLANS**

CONSTRUCTION OF THE FOLLOWING ITEMS WHERE CALLED FOR ON THE PLANS, WILL BE CONSTRUCTED ACCORDING TO THE MICHIGAN DEPARTMENT OF TRANSPORTATION STANDARD PLANS UNLESS OTHERWISE INDICATED.

**STANDARD PLANS**

SIDEWALK RAMP AND DETECTABLE WARNING DETAILS	R-28-J
DRIVEWAY OPENING & APPROACHES AND CONCRETE SIDEWALK	R-29-I
SOIL EROSION & SEDIMENTATION CONTROL MEASURES	R-96-E
SEEDING AND TREE PLANTING	R-100-I*

**TRAFFIC CONTROL STANDARD PLANS**

GROUND DRIVEN SIGN SUPPORTS FOR TEMPORARY SIGNS	WZD-100-A*
TEMPORARY TRAFFIC CONTROL DEVICES	WZD-125-E*

\* DENOTES SPECIAL DETAIL

**GENERAL NOTES**

FOR PROTECTION OF UNDERGROUND UTILITIES AND IN CONFORMANCE WITH PUBLIC ACT 174 OF 2013, THE CONTRACTOR SHALL DIAL 1-800-482-7171 A MINIMUM OF THREE FULL WORKING DAYS, EXCLUDING SATURDAYS, SUNDAYS, AND HOLIDAYS PRIOR TO BEGINNING EACH EXCAVATION IN AREAS WHERE PUBLIC UTILITIES HAVE NOT BEEN PREVIOUSLY LOCATED.

THE PLACING OF PAVEMENT MARKING AND TRAFFIC CONTROL SIGNS SHALL BE DONE IN ACCORDANCE WITH THE MICHIGAN MANUAL OF UNIFORM TRAFFIC CONTROL DEVICES, 2011 EDITION.

THE IMPROVEMENTS COVERED BY THESE PLANS SHALL BE DONE IN ACCORDANCE WITH THE MICHIGAN DEPARTMENT OF TRANSPORTATION 2020 STANDARD SPECIFICATIONS FOR CONSTRUCTION AS AMENDED BY SUPPLEMENTAL SPECIFICATIONS AND SPECIAL PROVISIONS.

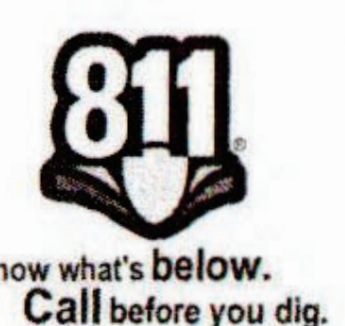
PROJECT LENGTH: 0.60 MILES

CONTRACT FOR: STREET LIGHTING, SIDEWALK, TREE PLANTING, SITE FURNITURE AND RELATED WORK IN THE VILLAGE OF ALANSON, EMMET COUNTY

VILLAGE OF ALANSON APPROVAL

*Greg Babcock* 5/18/23  
GREG BABCOCK VILLAGE PRESIDENT DATE

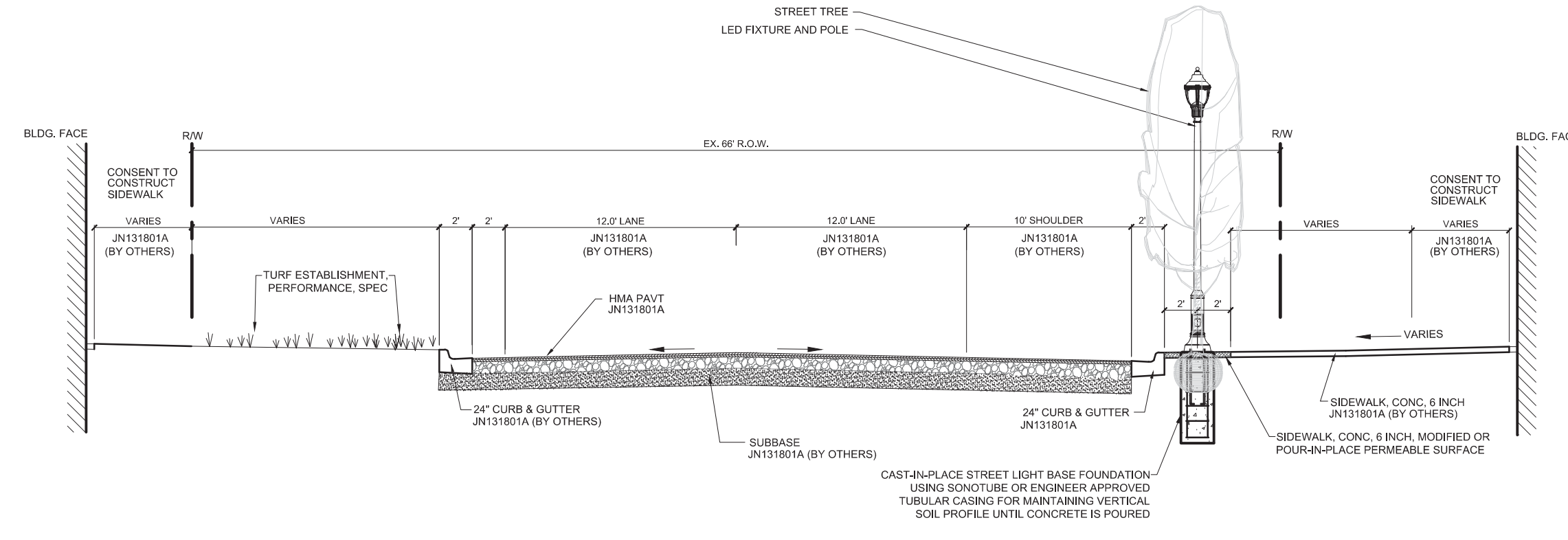
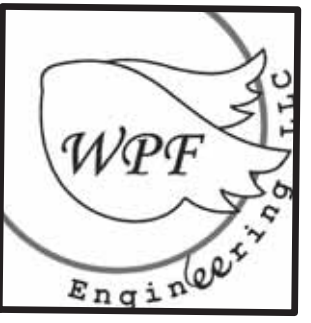
PREPARED UNDER SUPERVISION OF



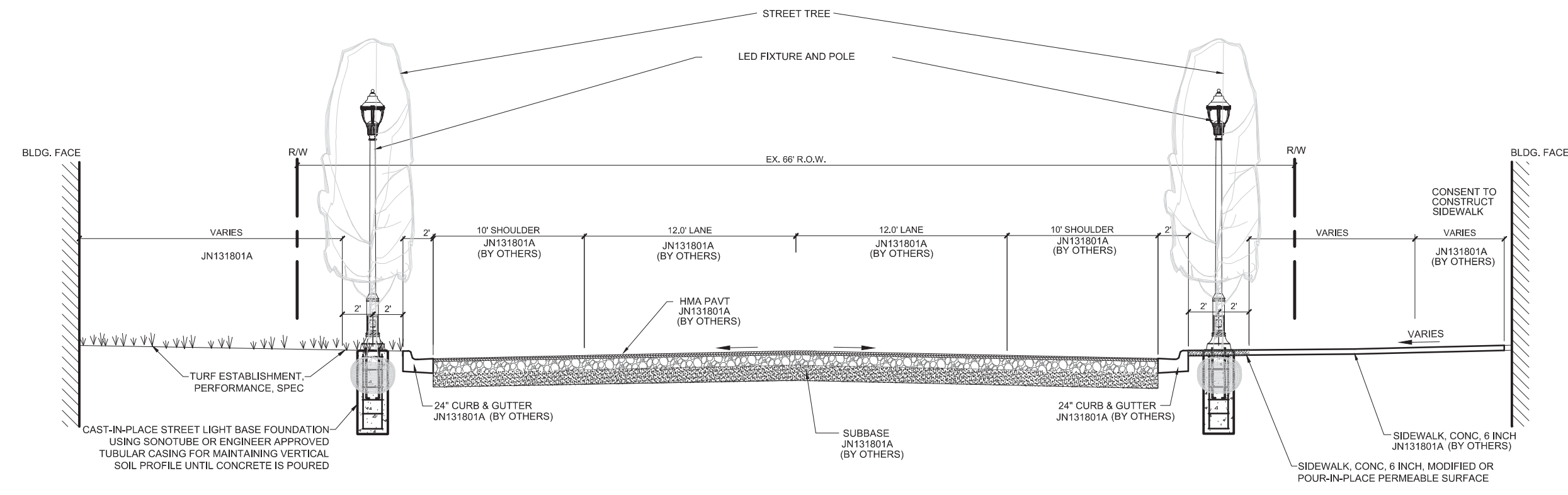
*Donald J. Devries*  
DONALD J. DEVRIES, PE  
REGISTERED PROFESSIONAL ENGINEER No. 39621  
FLEIS & VANDENBRINK ENGINEERING, INC.



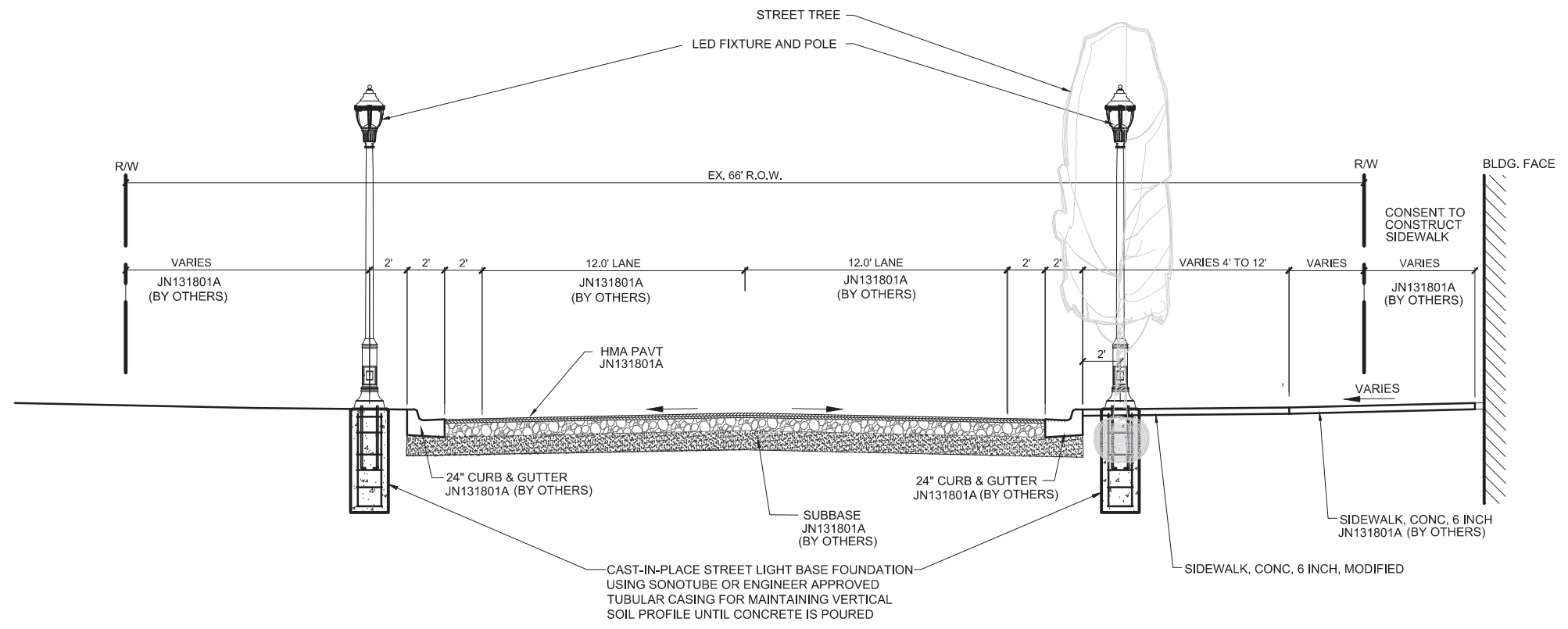
5/10/23  
DATE



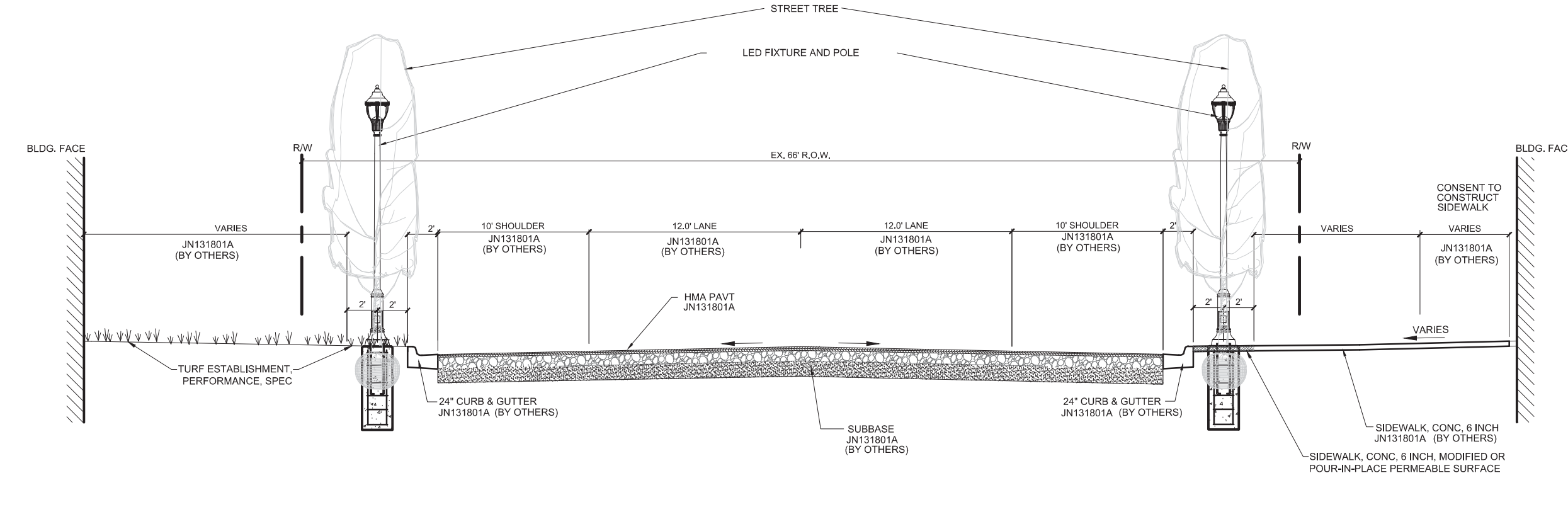
**PROPOSED TYPICAL SECTION - US-31 IMPROVEMENTS**  
**APPROX. STA. 542+50 (POB) - 545+10**  
 NOT TO SCALE



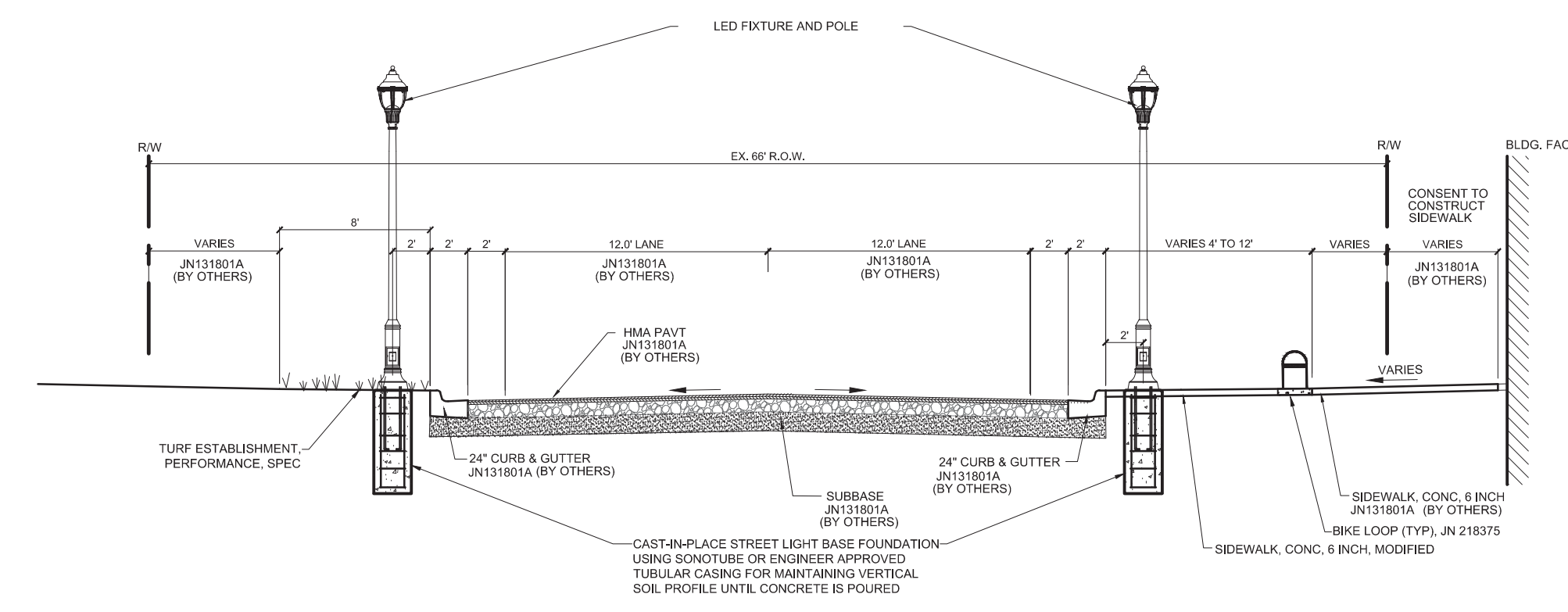
**PROPOSED TYPICAL SECTION - US-31 IMPROVEMENTS**  
**APPROX. STA. 549+50 - 553+00**  
 NOT TO SCALE



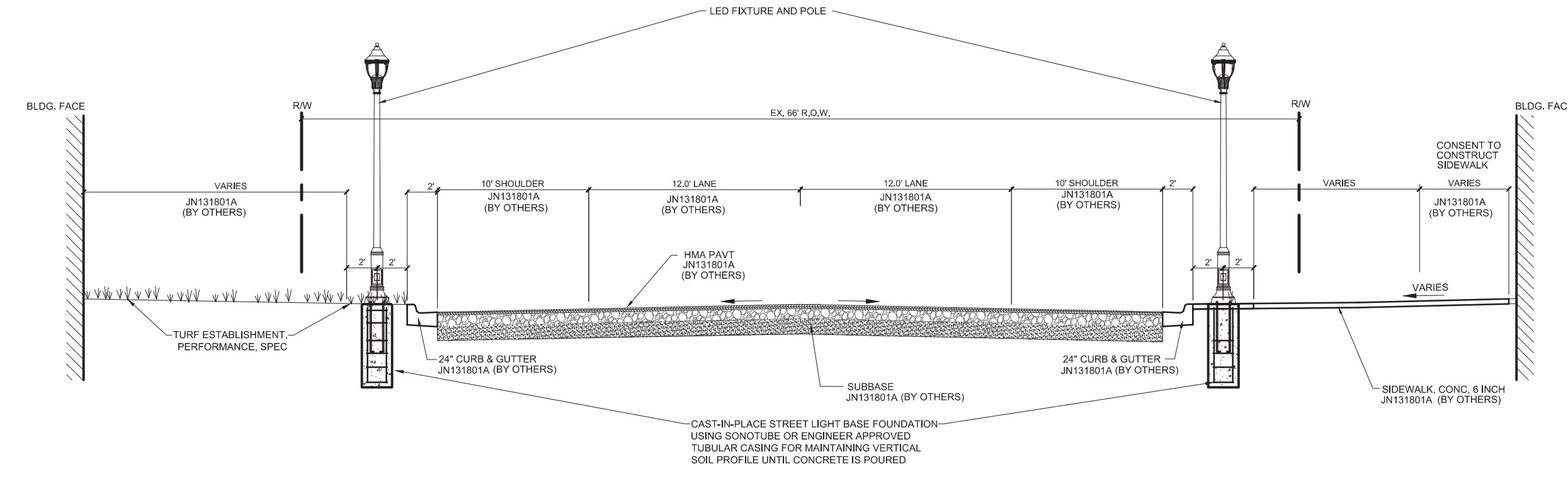
**PROPOSED TYPICAL SECTION - US-31 IMPROVEMENTS**  
**APPROX. STA. 545+10 - 547+45**  
 NOT TO SCALE



**PROPOSED TYPICAL SECTION - US-31 IMPROVEMENTS**  
**APPROX. STA. 553+00 - 556+18**  
 NOT TO SCALE

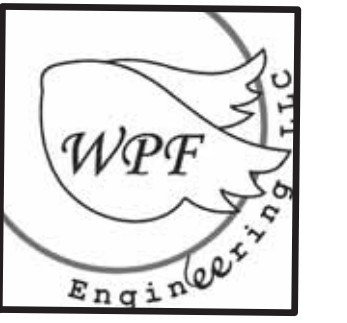


**PROPOSED TYPICAL SECTION - US-31 IMPROVEMENTS**  
**APPROX. STA. 547+45 - 549+50**  
 NOT TO SCALE



**PROPOSED TYPICAL SECTION - US-31 IMPROVEMENTS**  
**APPROX. STA. 556+18 - 556+96**  
 NOT TO SCALE

I:\Proj\845110-447000\845110\_Alanson\_Tap\_C101.dwg - plotted on: 7/7/2023, 4:28 PM



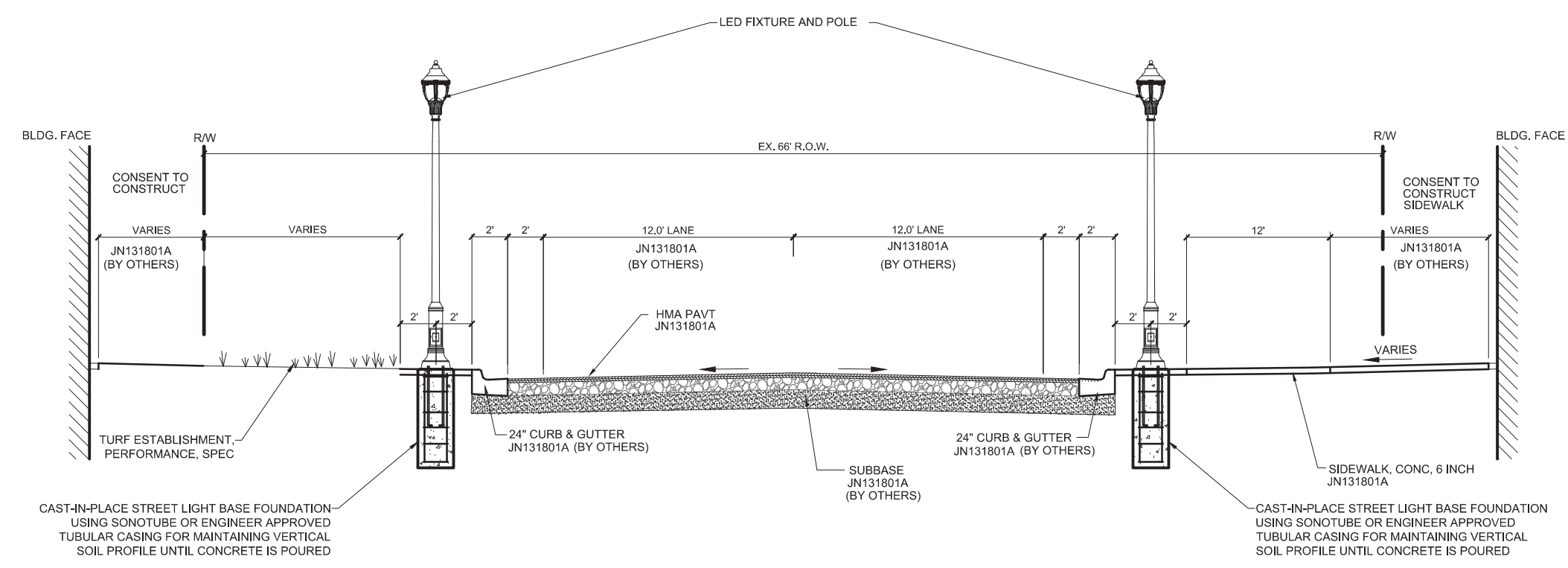
REVISION:

VILLAGE OF ALANSON  
EMMET COUNTY, MICHIGAN  
**US-31 & RIVER ST ENHANCEMENT IMPROVEMENTS**  
CROSS SECTIONS

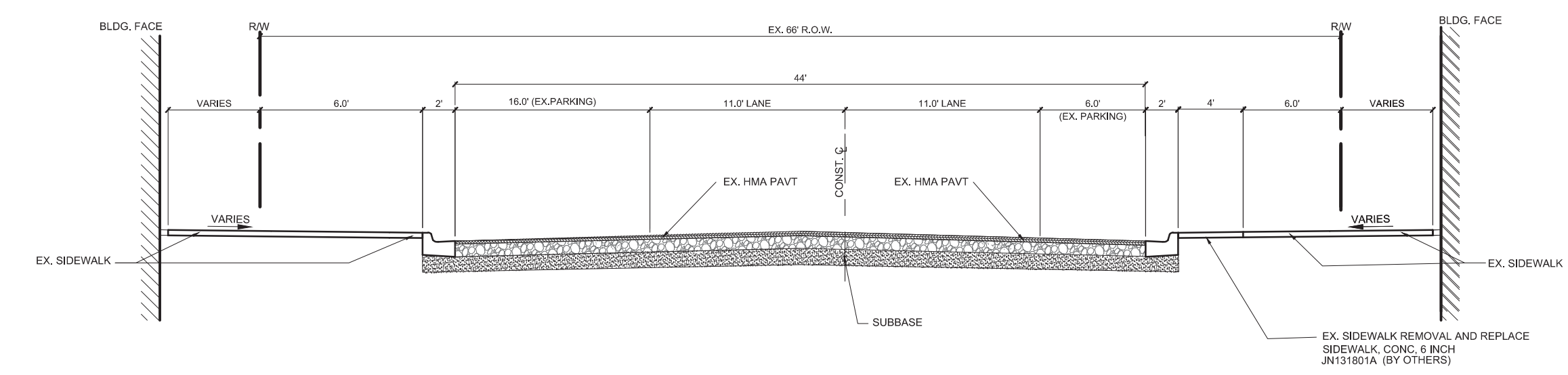
DESIGN TEAM: PROJ MGRS: RWS  
DESIGNED BY: RWS  
DRAWN BY: AIF  
CHECK BY:

DRAWING INFORMATION:  
045110 - Alanson Tap C101  
070723 andrew.filler

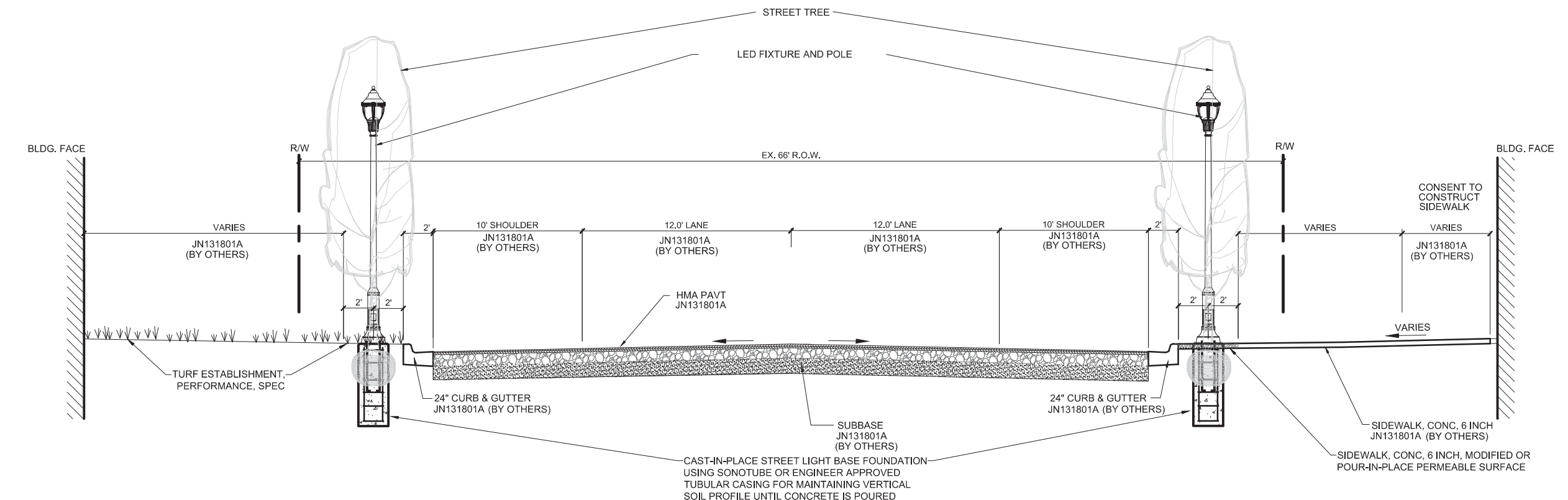
F&V PROJECT NO.



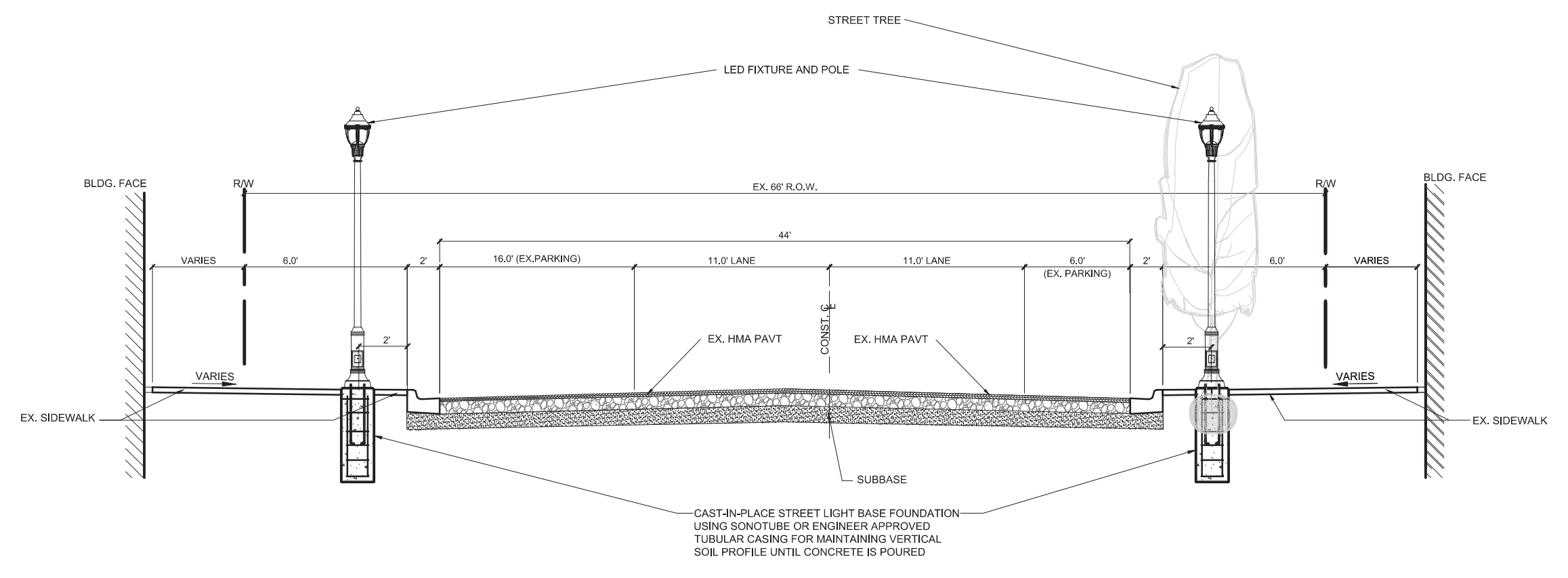
**PROPOSED TYPICAL SECTION - US-31 IMPROVEMENTS**  
**APPROX. STA. 556+96 - 557+50**  
NOT TO SCALE



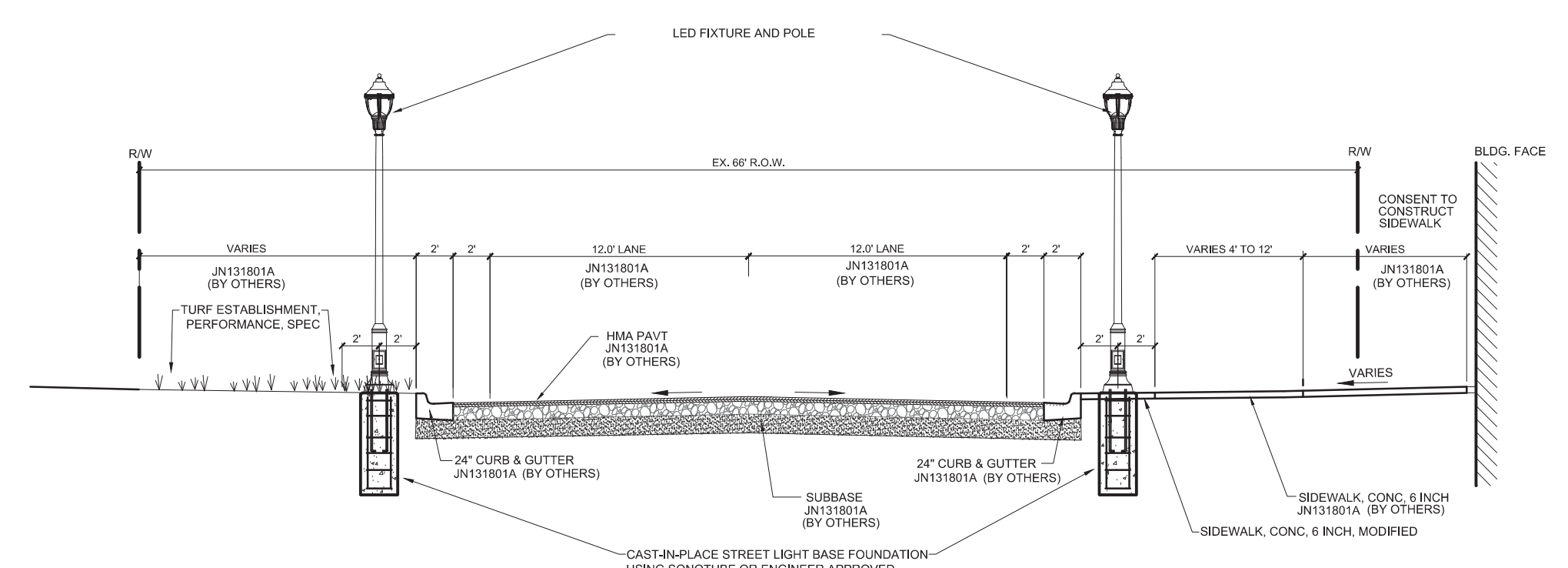
**EXISTING CROSS SECTION - RIVER STREET**  
**APPROX. STA. 10+00 - 18+80**  
NOT TO SCALE



**PROPOSED TYPICAL SECTION - US-31 IMPROVEMENTS**  
**APPROX. STA. 557+50 - 563+65**  
NOT TO SCALE



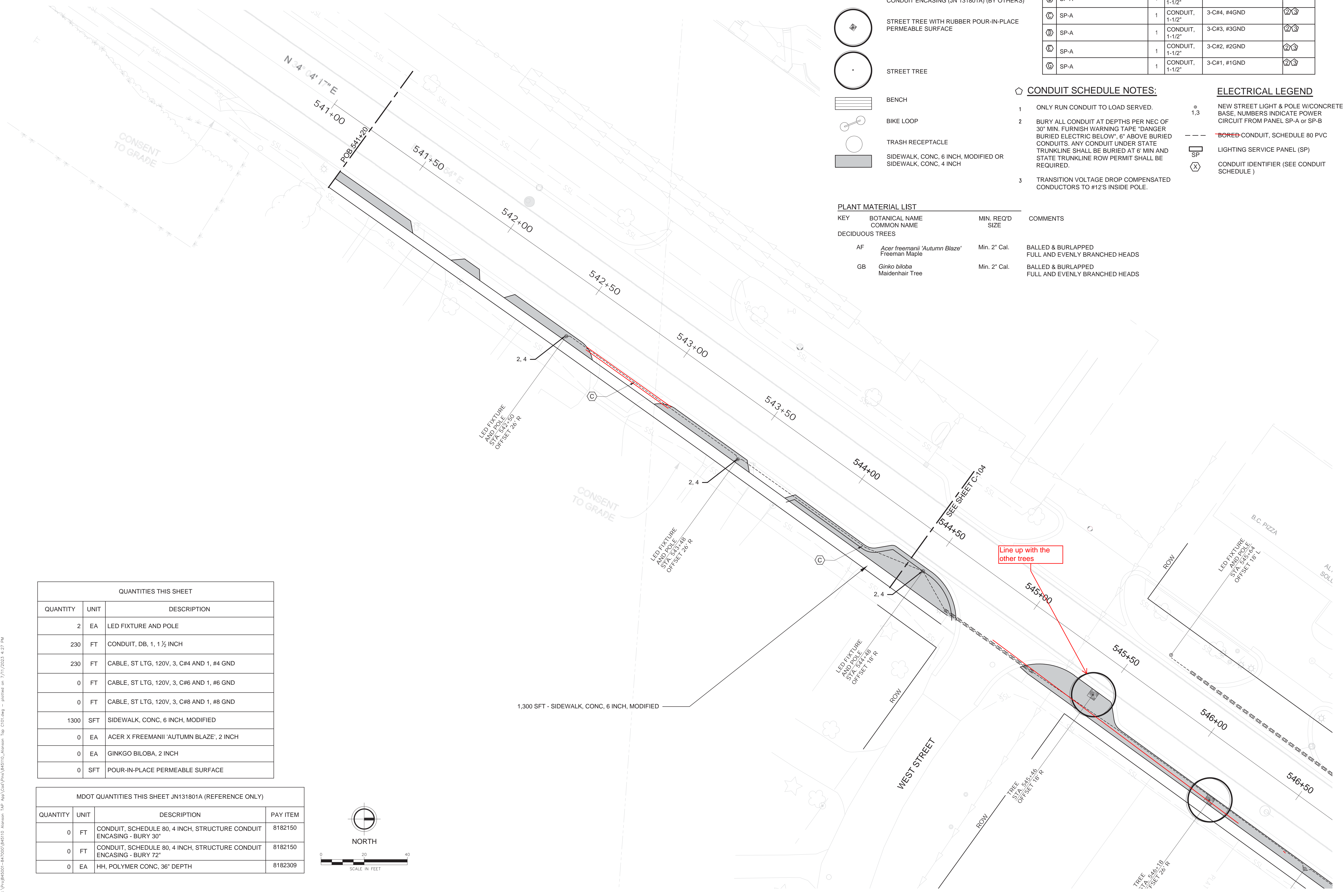
**PROPOSED CROSS SECTION - RIVER STREET**  
**APPROX. STA. 10+00 - 18+80**  
NOT TO SCALE



**PROPOSED TYPICAL SECTION - US-31 IMPROVEMENTS**  
**APPROX. STA. 563+65 - 564+00 (POE)**  
NOT TO SCALE

I:\Proj\845110-447000\845110\_Alanson\_Tap\_C101.dwg - plotted on: 7/7/2023, 4:28 PM

I:\Projects\45110-47200\45110\_Alanston\_TAP\_App\Doc\Plan\45110\_Alanston\_Top\_C101.dwg - plotted on: 7/11/2023 4:27 PM



**LEGEND KEY**

- LED FIXTURE AND POLE
- HH, POLYMER CONC, 36" DEPTH (JN 131801A) (BY OTHERS)
- ▬ CONDUIT, SCHEDULE 80, 4 INCH, STRUCTURE CONDUIT ENCASING (JN 131801A) (BY OTHERS)
- STREET TREE WITH RUBBER POUR-IN-PLACE PERMEABLE SURFACE
- STREET TREE
- ▬ BENCH
- BIKE LOOP
- TRASH RECEPTACLE
- ▬ SIDEWALK, CONC, 6 INCH, MODIFIED OR SIDEWALK, CONC, 4 INCH

CONDUIT SCHEDULE					
REF	LOCATION SOURCE	CONDUIT QTY.	CONDUIT SIZE	CONDUCTOR	NOTES
A	SP-A	1	CONDUIT, 1-1/2"	3-C#8, #8GND	ⓂⓂ
B	SP-A	1	CONDUIT, 1-1/2"	3-C#6, #6GND	ⓂⓂ
C	SP-A	1	CONDUIT, 1-1/2"	3-C#4, #4GND	ⓂⓂ
D	SP-A	1	CONDUIT, 1-1/2"	3-C#3, #3GND	ⓂⓂ
E	SP-A	1	CONDUIT, 1-1/2"	3-C#2, #2GND	ⓂⓂ
F	SP-A	1	CONDUIT, 1-1/2"	3-C#1, #1GND	ⓂⓂ

- CONDUIT SCHEDULE NOTES:**
- ONLY RUN CONDUIT TO LOAD SERVED.
  - BURY ALL CONDUIT AT DEPTHS PER NEC OF 30" MIN. FURNISH WARNING TAPE "DANGER BURIED ELECTRIC BELOW", 6" ABOVE BURIED CONDUITS. ANY CONDUIT UNDER STATE TRUNKLINE SHALL BE BURIED AT 6' MIN AND STATE TRUNKLINE ROW PERMIT SHALL BE REQUIRED.
  - TRANSITION VOLTAGE DROP COMPENSATED CONDUCTORS TO #12'S INSIDE POLE.

**ELECTRICAL LEGEND**

- 1,3 NEW STREET LIGHT & POLE W/CONCRETE BASE. NUMBERS INDICATE POWER CIRCUIT FROM PANEL SP-A or SP-B
- ▬ BORED CONDUIT, SCHEDULE 80 PVC
- LIGHTING SERVICE PANEL (SP)
- Ⓜ CONDUIT IDENTIFIER (SEE CONDUIT SCHEDULE)

**PLANT MATERIAL LIST**

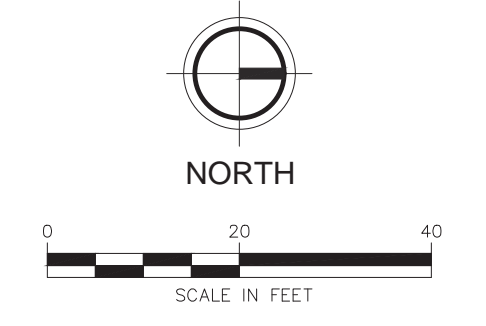
KEY	BOTANICAL NAME COMMON NAME	MIN. REQ'D SIZE	COMMENTS
<b>DECIDUOUS TREES</b>			
AF	<i>Acer freemanii</i> 'Autumn Blaze' Freeman Maple	Min. 2" Cal.	BALLED & BURLAPPED FULL AND EVENLY BRANCHED HEADS
GB	<i>Ginkgo biloba</i> Maidenhair Tree	Min. 2" Cal.	BALLED & BURLAPPED FULL AND EVENLY BRANCHED HEADS

**QUANTITIES THIS SHEET**

QUANTITY	UNIT	DESCRIPTION
2	EA	LED FIXTURE AND POLE
230	FT	CONDUIT, DB, 1, 1 1/2 INCH
230	FT	CABLE, ST LTG, 120V, 3, C#4 AND 1, #4 GND
0	FT	CABLE, ST LTG, 120V, 3, C#6 AND 1, #6 GND
0	FT	CABLE, ST LTG, 120V, 3, C#8 AND 1, #8 GND
1300	SFT	SIDEWALK, CONC, 6 INCH, MODIFIED
0	EA	ACER X FREEMANII 'AUTUMN BLAZE', 2 INCH
0	EA	GINKGO BILOBA, 2 INCH
0	SFT	POUR-IN-PLACE PERMEABLE SURFACE

**MDOT QUANTITIES THIS SHEET JN131801A (REFERENCE ONLY)**

QUANTITY	UNIT	DESCRIPTION	PAY ITEM
0	FT	CONDUIT, SCHEDULE 80, 4 INCH, STRUCTURE CONDUIT ENCASING - BURY 30"	8182150
0	FT	CONDUIT, SCHEDULE 80, 4 INCH, STRUCTURE CONDUIT ENCASING - BURY 72"	8182150
0	EA	HH, POLYMER CONC, 36" DEPTH	8182309



**FLEISCHMANN & VANDENBRINK**  
DESIGN. BUILD. OPERATE.

603 Bay St, First Floor  
Traverse City, MI 49684  
P: 231.932.8600  
F: 231.932.8700

Additional Services 7/6/2023 ANW

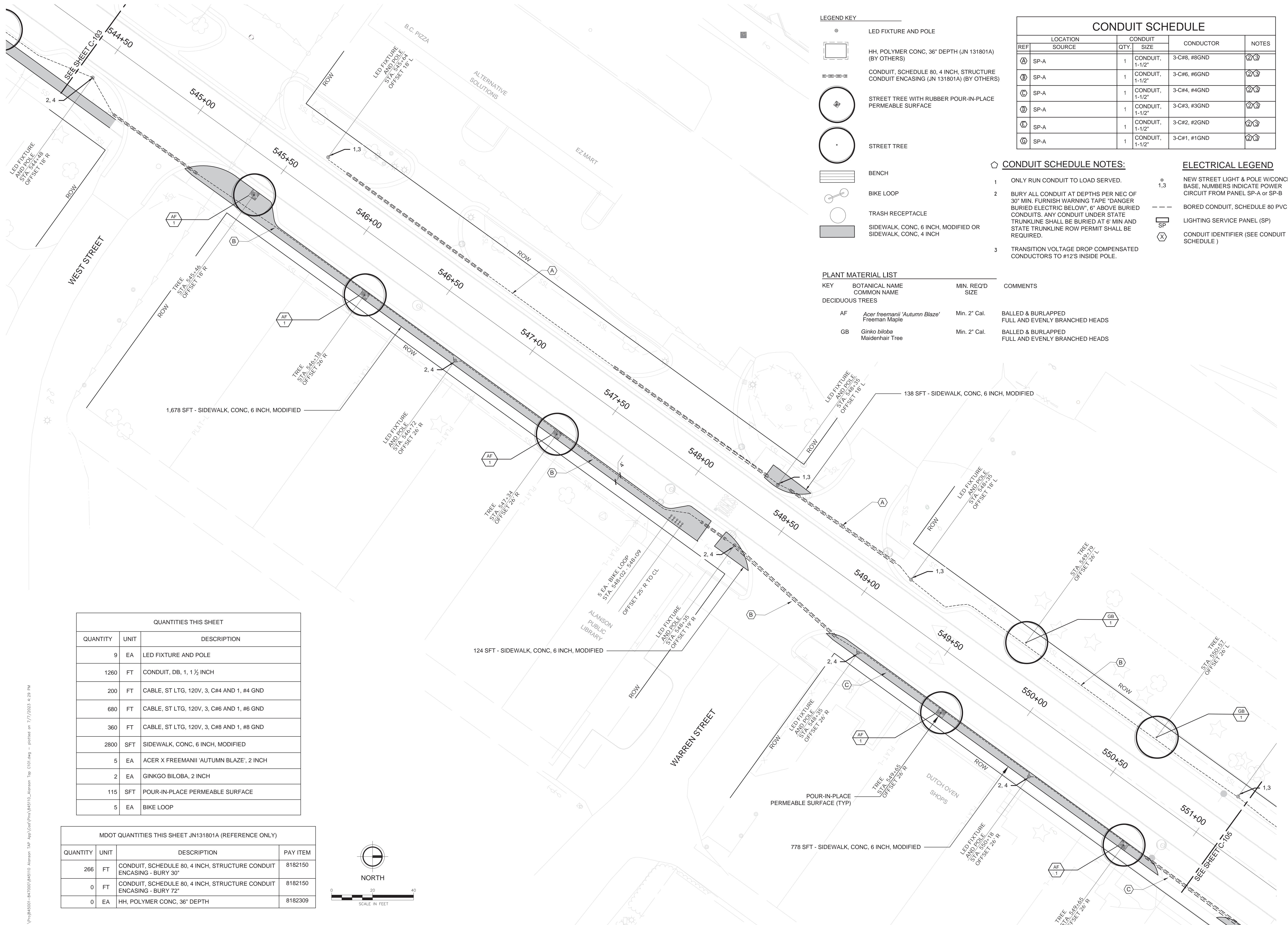
REVISION:

VILLAGE OF ALANSON  
EMMET COUNTY, MICHIGAN  
**US-31 & RIVER ST ENHANCEMENT IMPROVEMENTS**  
US-31 IMPROVEMENTS

DESIGN TEAM: PROJ MGR: RWS  
DESIGNED BY: RWS  
DRAWN BY: AWF  
CHECK BY:

DRAWING INFORMATION:  
0 Alanston Tap C101  
845110 andrew.filler

FAV PROJECT NO.



**LEGEND KEY**

- LED FIXTURE AND POLE
- HH, POLYMER CONC, 36" DEPTH (JN 131801A) (BY OTHERS)
- ▨ CONDUIT, SCHEDULE 80, 4 INCH, STRUCTURE CONDUIT ENCASING (JN 131801A) (BY OTHERS)
- STREET TREE WITH RUBBER POUR-IN-PLACE PERMEABLE SURFACE
- STREET TREE
- ▨ BENCH
- BIKE LOOP
- TRASH RECEPTACLE
- ▨ SIDEWALK, CONC, 6 INCH, MODIFIED OR SIDEWALK, CONC, 4 INCH

**PLANT MATERIAL LIST**

KEY	BOTANICAL NAME COMMON NAME	MIN. REQ'D SIZE	COMMENTS
<b>DECIDUOUS TREES</b>			
AF	<i>Acer freemanii</i> 'Autumn Blaze' Freeman Maple	Min. 2" Cal.	BALLED & BURLAPPED FULL AND EVENLY BRANCHED HEADS
GB	<i>Ginkgo biloba</i> Maidenhair Tree	Min. 2" Cal.	BALLED & BURLAPPED FULL AND EVENLY BRANCHED HEADS

CONDUIT SCHEDULE					
REF	LOCATION SOURCE	CONDUIT QTY.	CONDUIT SIZE	CONDUCTOR	NOTES
A	SP-A	1	CONDUIT, 1-1/2"	3-C#8, #8GND	ⓂⓂ
B	SP-A	1	CONDUIT, 1-1/2"	3-C#6, #6GND	ⓂⓂ
C	SP-A	1	CONDUIT, 1-1/2"	3-C#4, #4GND	ⓂⓂ
D	SP-A	1	CONDUIT, 1-1/2"	3-C#3, #3GND	ⓂⓂ
E	SP-A	1	CONDUIT, 1-1/2"	3-C#2, #2GND	ⓂⓂ
F	SP-A	1	CONDUIT, 1-1/2"	3-C#1, #1GND	ⓂⓂ

**CONDUIT SCHEDULE NOTES:**

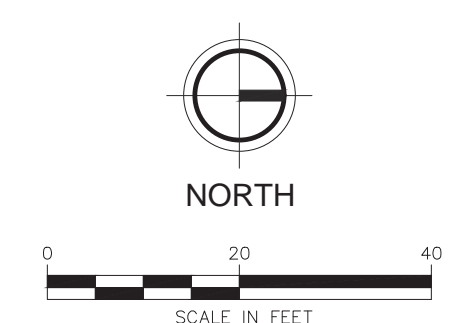
- ONLY RUN CONDUIT TO LOAD SERVED.
- BURY ALL CONDUIT AT DEPTHS PER NEC OF 30" MIN. FURNISH WARNING TAPE "DANGER BURIED ELECTRIC BELOW", 6" ABOVE BURIED CONDUITS. ANY CONDUIT UNDER STATE TRUNKLINE SHALL BE BURIED AT 6' MIN AND STATE TRUNKLINE ROW PERMIT SHALL BE REQUIRED.
- TRANSITION VOLTAGE DROP COMPENSATED CONDUCTORS TO #12'S INSIDE POLE.

**ELECTRICAL LEGEND**

- NEW STREET LIGHT & POLE W/CONCRETE BASE. NUMBERS INDICATE POWER CIRCUIT FROM PANEL SP-A or SP-B
- ▨ BORED CONDUIT, SCHEDULE 80 PVC
- LIGHTING SERVICE PANEL (SP)
- CONDUIT IDENTIFIER (SEE CONDUIT SCHEDULE)

QUANTITIES THIS SHEET		
QUANTITY	UNIT	DESCRIPTION
9	EA	LED FIXTURE AND POLE
1260	FT	CONDUIT, DB, 1, 1 1/2 INCH
200	FT	CABLE, ST LTG, 120V, 3, C#4 AND 1, #4 GND
680	FT	CABLE, ST LTG, 120V, 3, C#6 AND 1, #6 GND
360	FT	CABLE, ST LTG, 120V, 3, C#8 AND 1, #8 GND
2800	SFT	SIDEWALK, CONC, 6 INCH, MODIFIED
5	EA	ACER X FREEMANII 'AUTUMN BLAZE', 2 INCH
2	EA	GINKGO BILOBA, 2 INCH
115	SFT	POUR-IN-PLACE PERMEABLE SURFACE
5	EA	BIKE LOOP

MDOT QUANTITIES THIS SHEET JN131801A (REFERENCE ONLY)			
QUANTITY	UNIT	DESCRIPTION	PAY ITEM
266	FT	CONDUIT, SCHEDULE 80, 4 INCH, STRUCTURE CONDUIT ENCASING - BURY 30"	8182150
0	FT	CONDUIT, SCHEDULE 80, 4 INCH, STRUCTURE CONDUIT ENCASING - BURY 72"	8182150
0	EA	HH, POLYMER CONC, 36" DEPTH	8182309



**FLEISCHMANN & VANDENBRINK**  
DESIGN. BUILD. OPERATE.

603 Bay St, First Floor  
Traverse City, MI 49684  
P: 231.932.8600  
F: 231.932.8700

**WPF**  
Engineering LLC

REVISION:

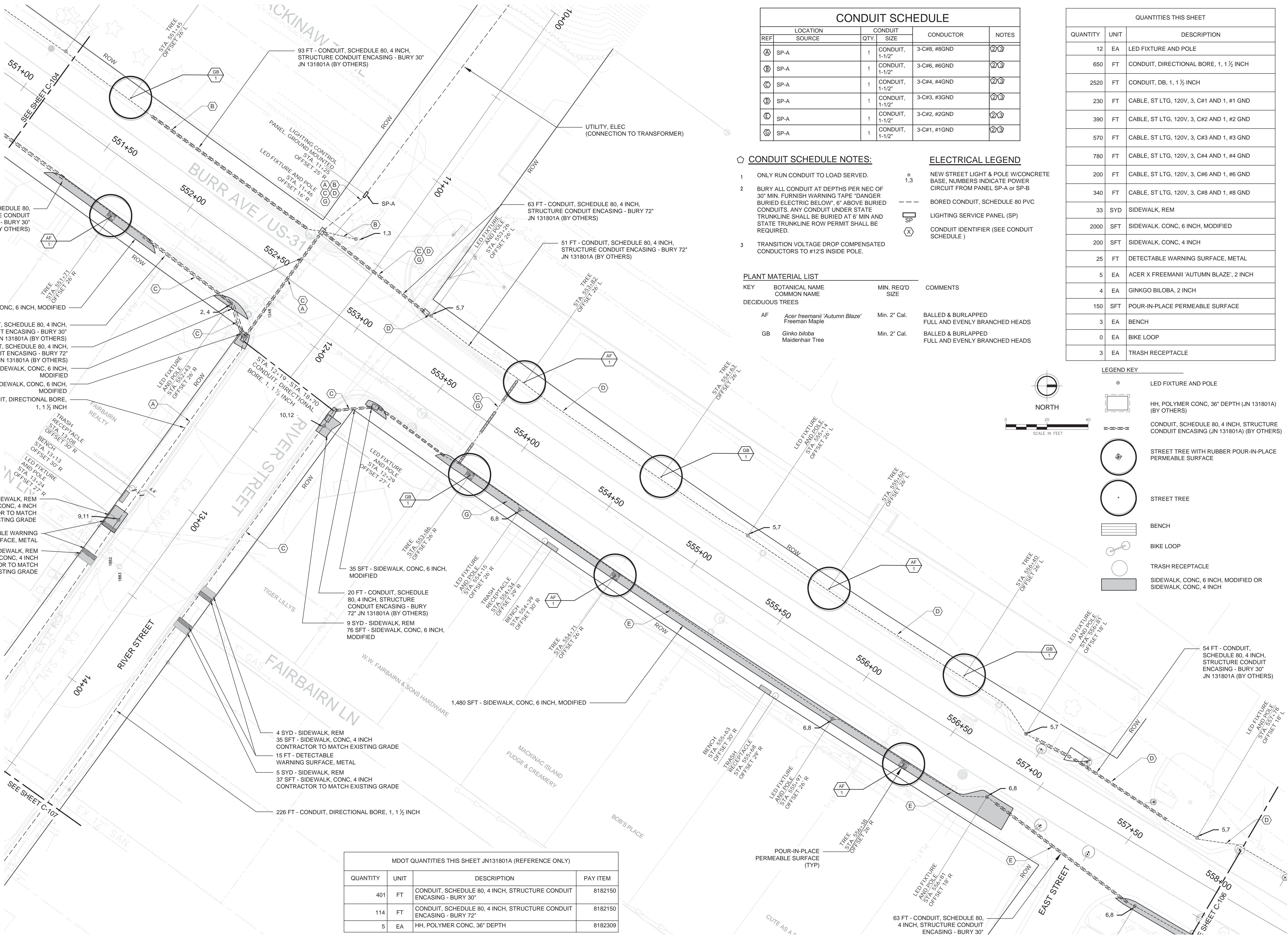
**VILLAGE OF ALANSON**  
EMMET COUNTY, MICHIGAN  
**US-31 & RIVER ST ENHANCEMENT IMPROVEMENTS**  
US-31 IMPROVEMENTS

DESIGN TEAM: PROJ MGR: RWS  
DESIGNED BY: RWS  
DRAWN BY: AWF  
CHECK BY:

DRAWING INFORMATION:  
845110 - Alanson Tap C101  
070723 andrew.filler

FAV PROJECT NO.

**C-104**



### CONDUIT SCHEDULE

REF	LOCATION SOURCE	CONDUIT QTY	CONDUIT SIZE	CONDUCTOR	NOTES
A	SP-A	1	CONDUIT, 1-1/2"	3-C#8, #8GND	ⓂⓃ
B	SP-A	1	CONDUIT, 1-1/2"	3-C#6, #6GND	ⓂⓃ
C	SP-A	1	CONDUIT, 1-1/2"	3-C#4, #4GND	ⓂⓃ
D	SP-A	1	CONDUIT, 1-1/2"	3-C#3, #3GND	ⓂⓃ
E	SP-A	1	CONDUIT, 1-1/2"	3-C#2, #2GND	ⓂⓃ
F	SP-A	1	CONDUIT, 1-1/2"	3-C#1, #1GND	ⓂⓃ

### QUANTITIES THIS SHEET

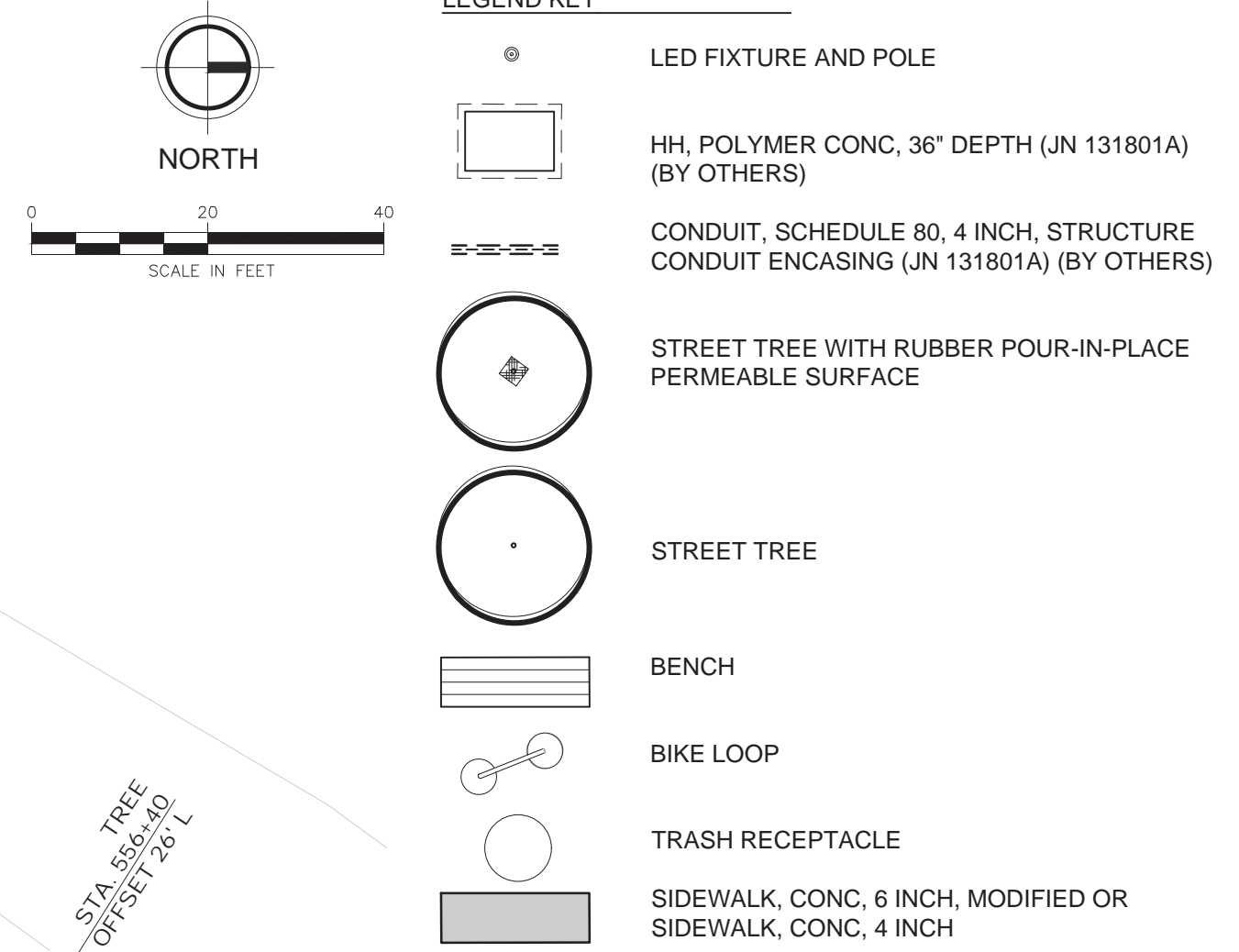
QUANTITY	UNIT	DESCRIPTION
12	EA	LED FIXTURE AND POLE
650	FT	CONDUIT, DIRECTIONAL BORE, 1, 1 1/2 INCH
2520	FT	CONDUIT, DB, 1, 1 1/2 INCH
230	FT	CABLE, ST LTG, 120V, 3, C#1 AND 1, #1 GND
390	FT	CABLE, ST LTG, 120V, 3, C#2 AND 1, #2 GND
570	FT	CABLE, ST LTG, 120V, 3, C#3 AND 1, #3 GND
780	FT	CABLE, ST LTG, 120V, 3, C#4 AND 1, #4 GND
200	FT	CABLE, ST LTG, 120V, 3, C#6 AND 1, #6 GND
340	FT	CABLE, ST LTG, 120V, 3, C#8 AND 1, #8 GND
33	SYD	SIDEWALK, REM
2000	SFT	SIDEWALK, CONC, 6 INCH, MODIFIED
200	SFT	SIDEWALK, CONC, 4 INCH
25	FT	DETECTABLE WARNING SURFACE, METAL
5	EA	ACER X FREEMANII 'AUTUMN BLAZE', 2 INCH
4	EA	GINKGO BILOBA, 2 INCH
150	SFT	POUR-IN-PLACE PERMEABLE SURFACE
3	EA	BENCH
0	EA	BIKE LOOP
3	EA	TRASH RECEPTACLE

- #### CONDUIT SCHEDULE NOTES:
- ONLY RUN CONDUIT TO LOAD SERVED.
  - BURY ALL CONDUIT AT DEPTHS PER NEC OF 30" MIN. FURNISH WARNING TAPE "DANGER BURIED ELECTRIC BELOW", 6" ABOVE BURIED CONDUITS. ANY CONDUIT UNDER STATE TRUNKLINE SHALL BE BURIED AT 6' MIN AND STATE TRUNKLINE ROW PERMIT SHALL BE REQUIRED.
  - TRANSITION VOLTAGE DROP COMPENSATED CONDUCTORS TO #12'S INSIDE POLE.

- #### ELECTRICAL LEGEND
- NEW STREET LIGHT & POLE W/CONCRETE BASE, NUMBERS INDICATE POWER CIRCUIT FROM PANEL SP-A OR SP-B
  - BORED CONDUIT, SCHEDULE 80 PVC
  - Ⓜ LIGHTING SERVICE PANEL (SP)
  - Ⓧ CONDUIT IDENTIFIER (SEE CONDUIT SCHEDULE)

#### PLANT MATERIAL LIST

KEY	BOTANICAL NAME COMMON NAME	MIN. REQ'D SIZE	COMMENTS
<b>DECIDUOUS TREES</b>			
AF	<i>Acer freemanii</i> 'Autumn Blaze' Freeman Maple	Min. 2" Cal.	BALLED & BURLAPPED FULL AND EVENLY BRANCHED HEADS
GB	<i>Ginkgo biloba</i> Maidenhair Tree	Min. 2" Cal.	BALLED & BURLAPPED FULL AND EVENLY BRANCHED HEADS



#### MDOT QUANTITIES THIS SHEET JN131801A (REFERENCE ONLY)

QUANTITY	UNIT	DESCRIPTION	PAY ITEM
401	FT	CONDUIT, SCHEDULE 80, 4 INCH, STRUCTURE CONDUIT ENCASING - BURY 30"	8182150
114	FT	CONDUIT, SCHEDULE 80, 4 INCH, STRUCTURE CONDUIT ENCASING - BURY 72"	8182150
5	EA	HH, POLYMER CONC, 36" DEPTH	8182309

**FLEIS & VANDENBRINK**  
DESIGN, BUILD, OPERATE

603 Bay St, First Floor  
Traverse City, MI 49684  
P: 231.932.8600  
F: 231.932.8700

Additional Services 782023 AWF

REVISION:

**VILLAGE OF ALANSON**  
EMMET COUNTY, MICHIGAN

**US-31 & RIVER ST ENHANCEMENT IMPROVEMENTS**

**US-31 IMPROVEMENTS**

DESIGN TEAM: PROJMGR: RWS  
DESIGNED BY: RWS  
DRAWN BY: AWF

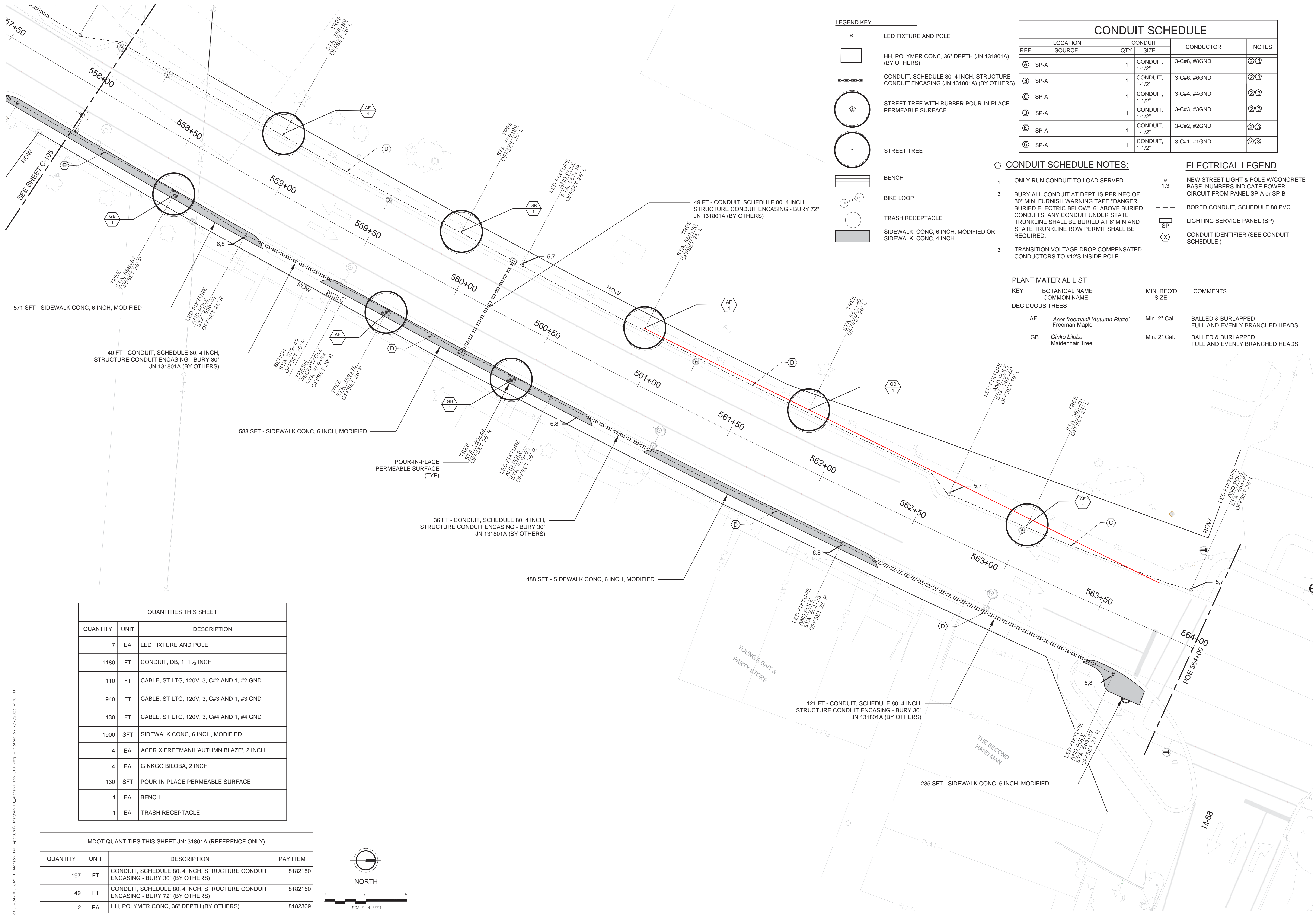
CHECK BY:

DRAWING INFORMATION:  
845110\_Alanson Tap C101  
070723 andrew.filler

FAV PROJECT NO.

**C-105**

V:\proj\845110-847000\845110\_Alanson\_Tap\_Awf\Draw\Draw\845110\_Alanson\_Tap\_C101.dwg - plotted on 7/7/2023, 4:30 PM



**LEGEND KEY**

- LED FIXTURE AND POLE
- HH, POLYMER CONC, 36" DEPTH (JN 131801A) (BY OTHERS)
- CONDUIT, SCHEDULE 80, 4 INCH, STRUCTURE CONDUIT ENCASING (JN 131801A) (BY OTHERS)
- STREET TREE WITH RUBBER POUR-IN-PLACE PERMEABLE SURFACE
- STREET TREE
- ▬ BENCH
- BIKE LOOP
- TRASH RECEPTACLE
- ▬ SIDEWALK, CONC, 6 INCH, MODIFIED OR SIDEWALK, CONC, 4 INCH

CONDUIT SCHEDULE					
REF	LOCATION SOURCE	CONDUIT QTY.	CONDUIT SIZE	CONDUCTOR	NOTES
A	SP-A	1	CONDUIT, 1-1/2"	3-C#8, #8GND	②③
B	SP-A	1	CONDUIT, 1-1/2"	3-C#6, #6GND	②③
C	SP-A	1	CONDUIT, 1-1/2"	3-C#4, #4GND	②③
D	SP-A	1	CONDUIT, 1-1/2"	3-C#3, #3GND	②③
E	SP-A	1	CONDUIT, 1-1/2"	3-C#2, #2GND	②③
F	SP-A	1	CONDUIT, 1-1/2"	3-C#1, #1GND	②③

- CONDUIT SCHEDULE NOTES:**
- ONLY RUN CONDUIT TO LOAD SERVED.
  - BURY ALL CONDUIT AT DEPTHS PER NEC OF 30" MIN. FURNISH WARNING TAPE "DANGER BURIED ELECTRIC BELOW", 6" ABOVE BURIED CONDUITS. ANY CONDUIT UNDER STATE TRUNKLINE SHALL BE BURIED AT 6' MIN AND STATE TRUNKLINE ROW PERMIT SHALL BE REQUIRED.
  - TRANSITION VOLTAGE DROP COMPENSATED CONDUCTORS TO #12'S INSIDE POLE.
- ELECTRICAL LEGEND**
- NEW STREET LIGHT & POLE W/CONCRETE BASE, NUMBERS INDICATE POWER CIRCUIT FROM PANEL SP-A or SP-B
  - BORED CONDUIT, SCHEDULE 80 PVC
  - LIGHTING SERVICE PANEL (SP)
  - ⊗ CONDUIT IDENTIFIER (SEE CONDUIT SCHEDULE)

**PLANT MATERIAL LIST**

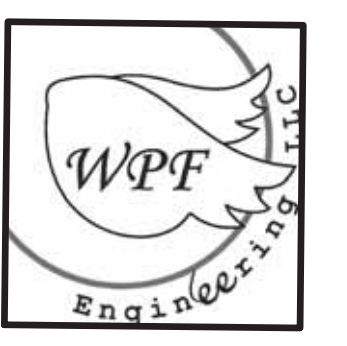
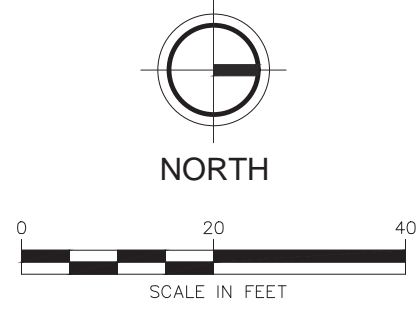
KEY	BOTANICAL NAME COMMON NAME	MIN. REQ'D SIZE	COMMENTS
<b>DECIDUOUS TREES</b>			
AF	<i>Acer freemanii</i> 'Autumn Blaze' Freeman Maple	Min. 2" Cal.	BALLED & BURLAPPED FULL AND EVENLY BRANCHED HEADS
GB	<i>Ginkgo biloba</i> Maidenhair Tree	Min. 2" Cal.	BALLED & BURLAPPED FULL AND EVENLY BRANCHED HEADS

**QUANTITIES THIS SHEET**

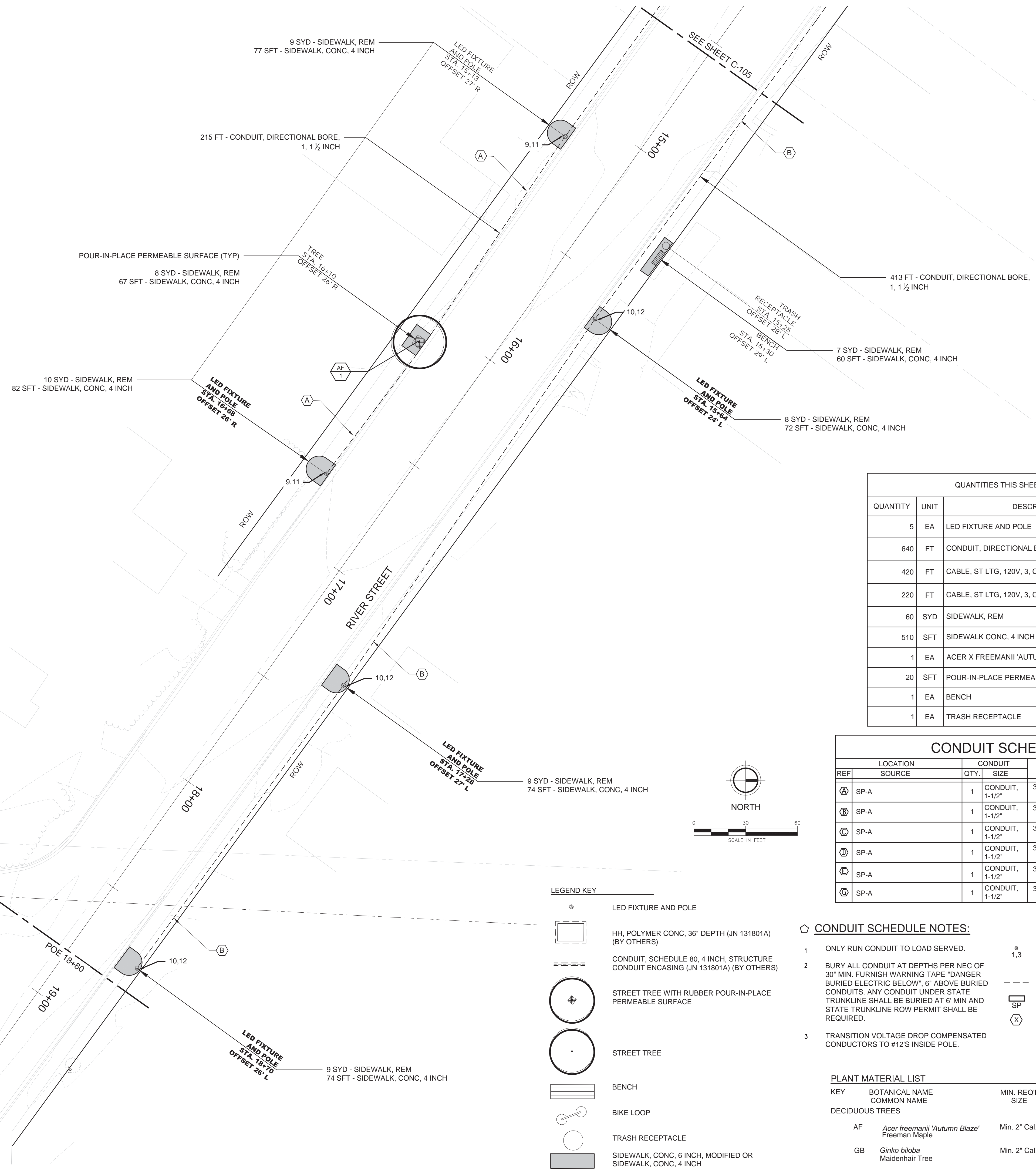
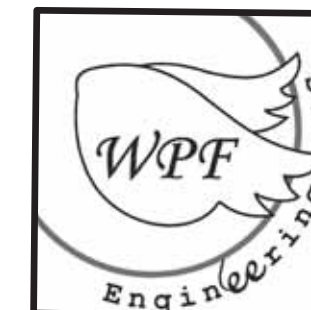
QUANTITY	UNIT	DESCRIPTION
7	EA	LED FIXTURE AND POLE
1180	FT	CONDUIT, DB, 1, 1 1/2 INCH
110	FT	CABLE, ST LTG, 120V, 3, C#2 AND 1, #2 GND
940	FT	CABLE, ST LTG, 120V, 3, C#3 AND 1, #3 GND
130	FT	CABLE, ST LTG, 120V, 3, C#4 AND 1, #4 GND
1900	SFT	SIDEWALK CONC, 6 INCH, MODIFIED
4	EA	ACER X FREEMANII 'AUTUMN BLAZE', 2 INCH
4	EA	GINKGO BILOBA, 2 INCH
130	SFT	POUR-IN-PLACE PERMEABLE SURFACE
1	EA	BENCH
1	EA	TRASH RECEPTACLE

**MDOT QUANTITIES THIS SHEET JN131801A (REFERENCE ONLY)**

QUANTITY	UNIT	DESCRIPTION	PAY ITEM
197	FT	CONDUIT, SCHEDULE 80, 4 INCH, STRUCTURE CONDUIT ENCASING - BURY 30" (BY OTHERS)	8182150
49	FT	CONDUIT, SCHEDULE 80, 4 INCH, STRUCTURE CONDUIT ENCASING - BURY 72" (BY OTHERS)	8182150
2	EA	HH, POLYMER CONC, 36" DEPTH (BY OTHERS)	8182309

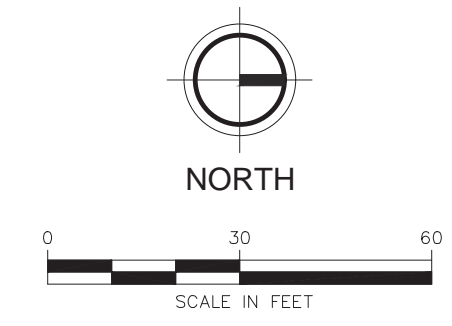


I:\Projects\845110-847023\845110-Alanson\_TAP\_070723.dwg - plotted on 7/7/2023 4:35 PM



QUANTITIES THIS SHEET		
QUANTITY	UNIT	DESCRIPTION
5	EA	LED FIXTURE AND POLE
640	FT	CONDUIT, DIRECTIONAL BORE, 1, 1 1/2 INCH
420	FT	CABLE, ST LTG, 120V, 3, C#6 AND 1, #6 GND
220	FT	CABLE, ST LTG, 120V, 3, C#8 AND 1, #8 GND
60	SYD	SIDEWALK, REM
510	SFT	SIDEWALK CONC, 4 INCH
1	EA	ACER X FREEMANII 'AUTUMN BLAZE', 2 INCH
20	SFT	POUR-IN-PLACE PERMEABLE SURFACE
1	EA	BENCH
1	EA	TRASH RECEPTACLE

CONDUIT SCHEDULE					
REF	LOCATION SOURCE	CONDUIT QTY.	CONDUIT SIZE	CONDUCTOR	NOTES
A	SP-A	1	CONDUIT, 1-1/2"	3-C#8, #8GND	ⓂⓂ
B	SP-A	1	CONDUIT, 1-1/2"	3-C#6, #6GND	ⓂⓂ
C	SP-A	1	CONDUIT, 1-1/2"	3-C#4, #4GND	ⓂⓂ
D	SP-A	1	CONDUIT, 1-1/2"	3-C#3, #3GND	ⓂⓂ
E	SP-A	1	CONDUIT, 1-1/2"	3-C#2, #2GND	ⓂⓂ
F	SP-A	1	CONDUIT, 1-1/2"	3-C#1, #1GND	ⓂⓂ



- LEGEND KEY**
- LED FIXTURE AND POLE
  - HH, POLYMER CONC, 36" DEPTH (JN 131801A) (BY OTHERS)
  - CONDUIT, SCHEDULE 80, 4 INCH, STRUCTURE CONDUIT ENCASING (JN 131801A) (BY OTHERS)
  - STREET TREE WITH RUBBER POUR-IN-PLACE PERMEABLE SURFACE
  - STREET TREE
  - BENCH
  - BIKE LOOP
  - TRASH RECEPTACLE
  - SIDEWALK, CONC, 6 INCH, MODIFIED OR SIDEWALK, CONC, 4 INCH

- CONDUIT SCHEDULE NOTES:**
- ONLY RUN CONDUIT TO LOAD SERVED.
  - BURY ALL CONDUIT AT DEPTHS PER NEC OF 30" MIN. FURNISH WARNING TAPE "DANGER BURIED ELECTRIC BELOW", 6" ABOVE BURIED CONDUITS. ANY CONDUIT UNDER STATE TRUNKLINE SHALL BE BURIED AT 6' MIN AND STATE TRUNKLINE ROW PERMIT SHALL BE REQUIRED.
  - TRANSITION VOLTAGE DROP COMPENSATED CONDUCTORS TO #12'S INSIDE POLE.

- ELECTRICAL LEGEND**
- NEW STREET LIGHT & POLE W/CONCRETE BASE, NUMBERS INDICATE POWER CIRCUIT FROM PANEL SP-A or SP-B
  - BORED CONDUIT, SCHEDULE 80 PVC
  - LIGHTING SERVICE PANEL (SP)
  - CONDUIT IDENTIFIER (SEE CONDUIT SCHEDULE)

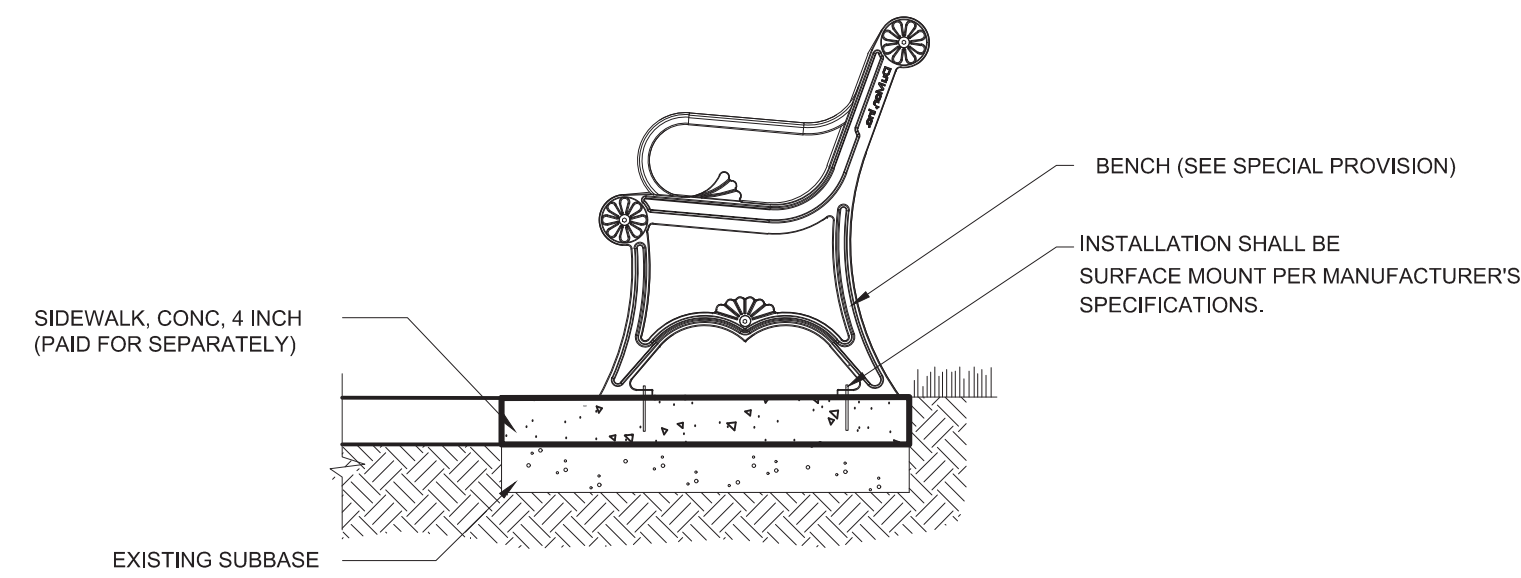
**PLANT MATERIAL LIST**

KEY	BOTANICAL NAME COMMON NAME	MIN. REQ'D SIZE	COMMENTS
AF	<i>Acer freemanii</i> 'Autumn Blaze' Freeman Maple	Min. 2" Cal.	BALLED & BURLAPPED FULL AND EVENLY BRANCHED HEADS
GB	<i>Ginkgo biloba</i> Maidenhair Tree	Min. 2" Cal.	BALLED & BURLAPPED FULL AND EVENLY BRANCHED HEADS

Y:\proj\845110-84511000\845110\_Alanson Tap App\Code\Plan\845110\_Alanson Tap C101.dwg - plotted on 7/7/2023 4:31 PM

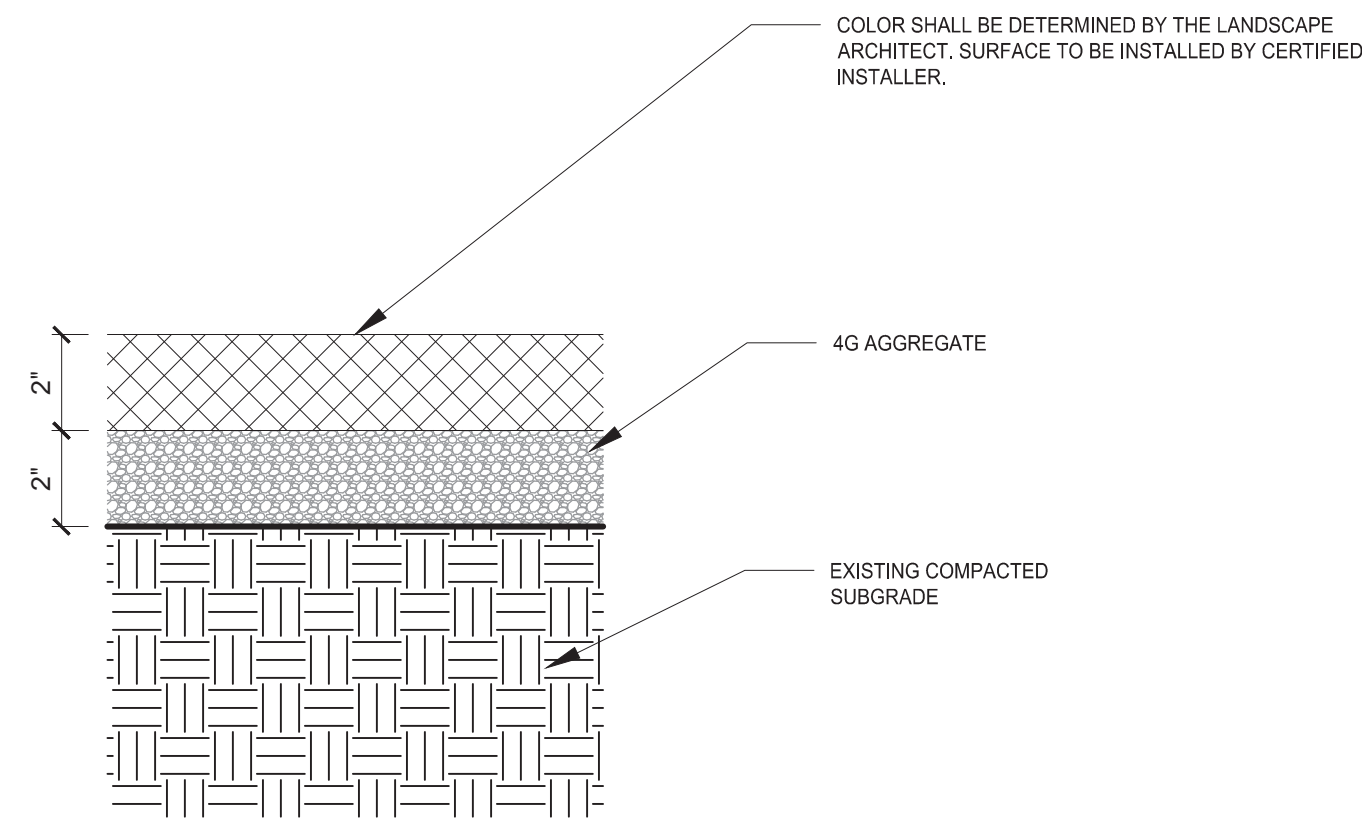




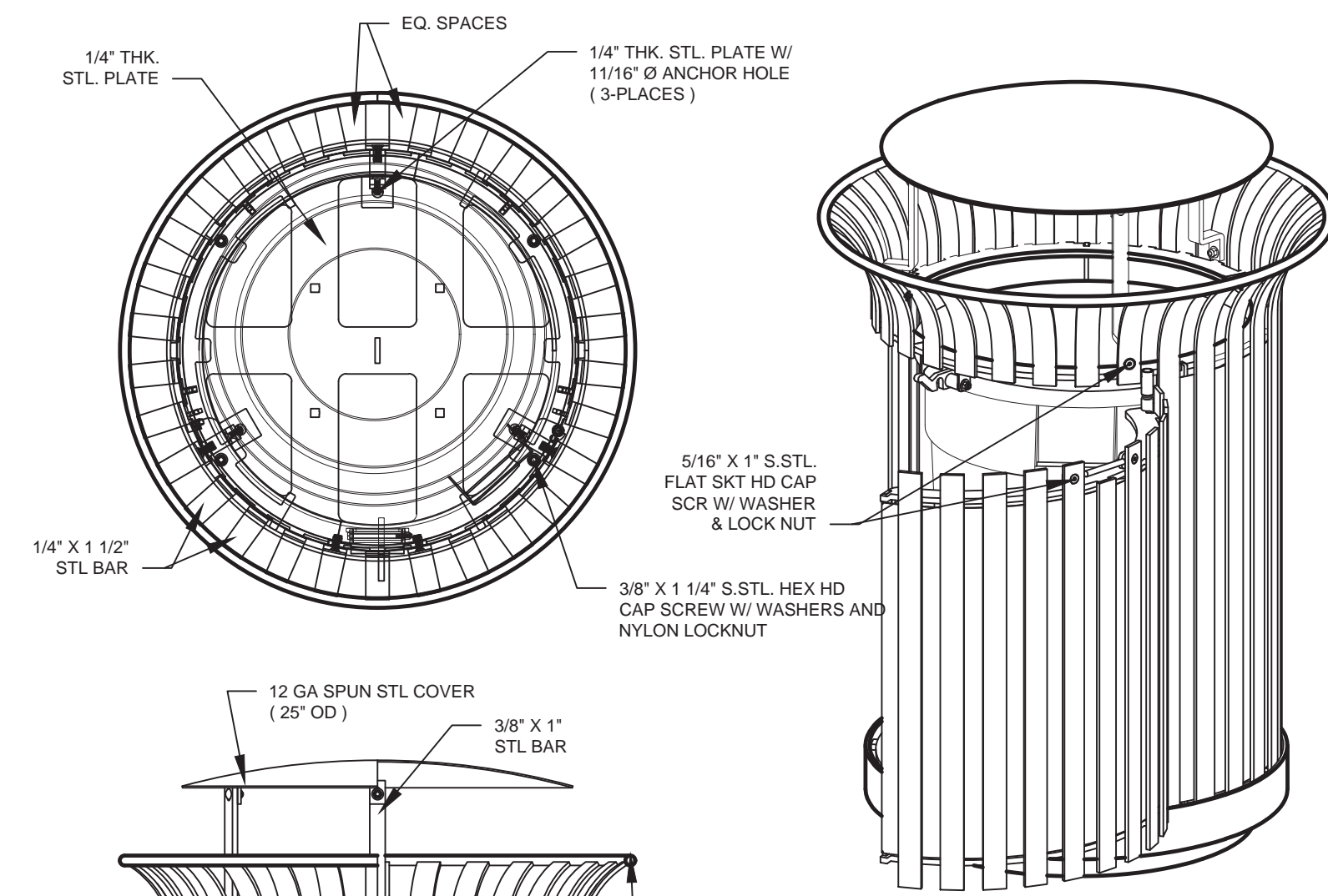


CONTRACTOR RESPONSIBLE FOR ANY ASSEMBLY OF UNIT PER MANUFACTURER'S SPECIFICATIONS  
CONTRACTOR SHALL INSTALL BENCHES LEVEL IN BOTH DIRECTIONS UNLESS APPROVED BY ENGINEER.

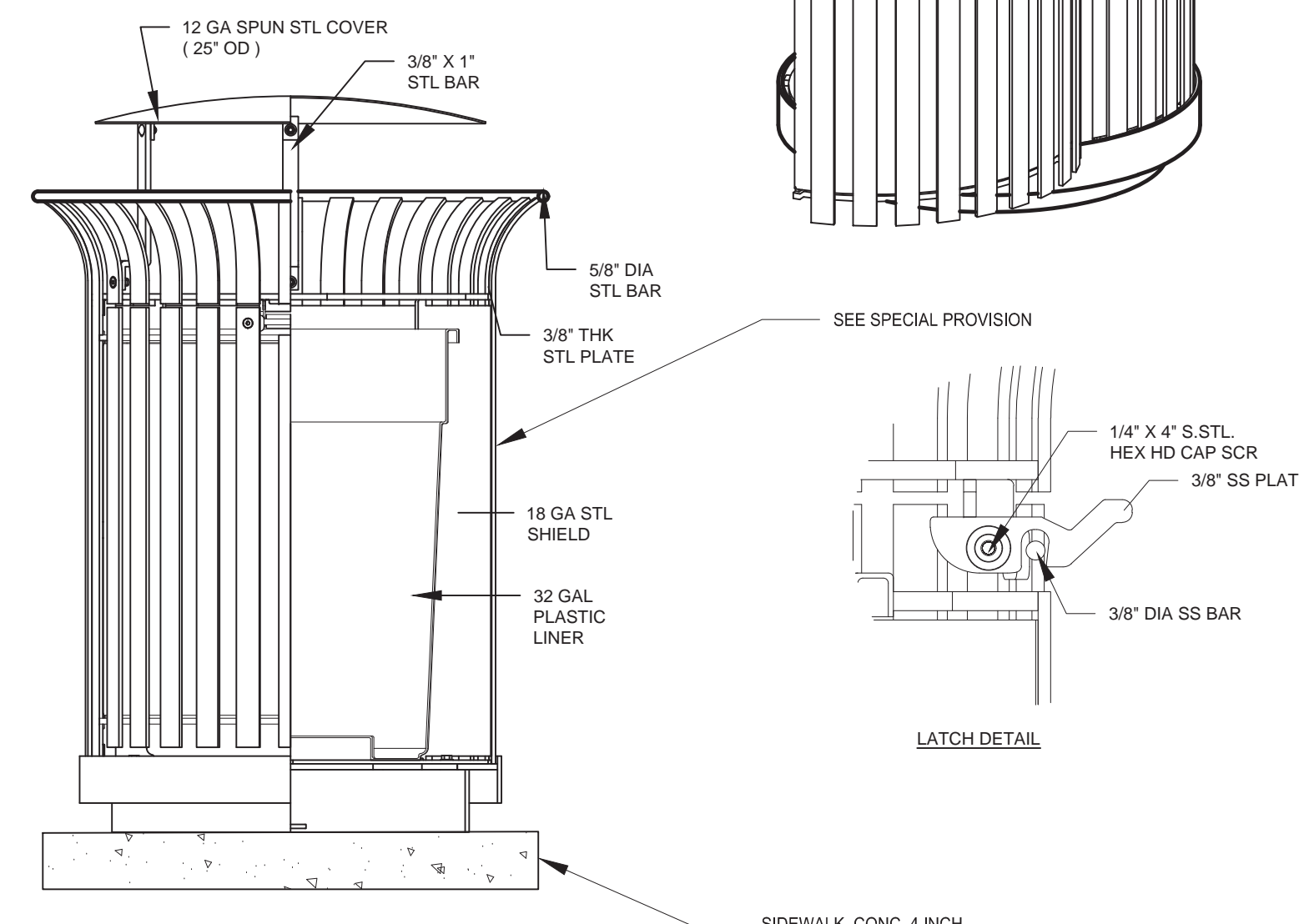
**BENCH DETAIL**  
NOT TO SCALE



**POUR-IN-PLACE PERMEABLE SURFACE**  
NOT TO SCALE

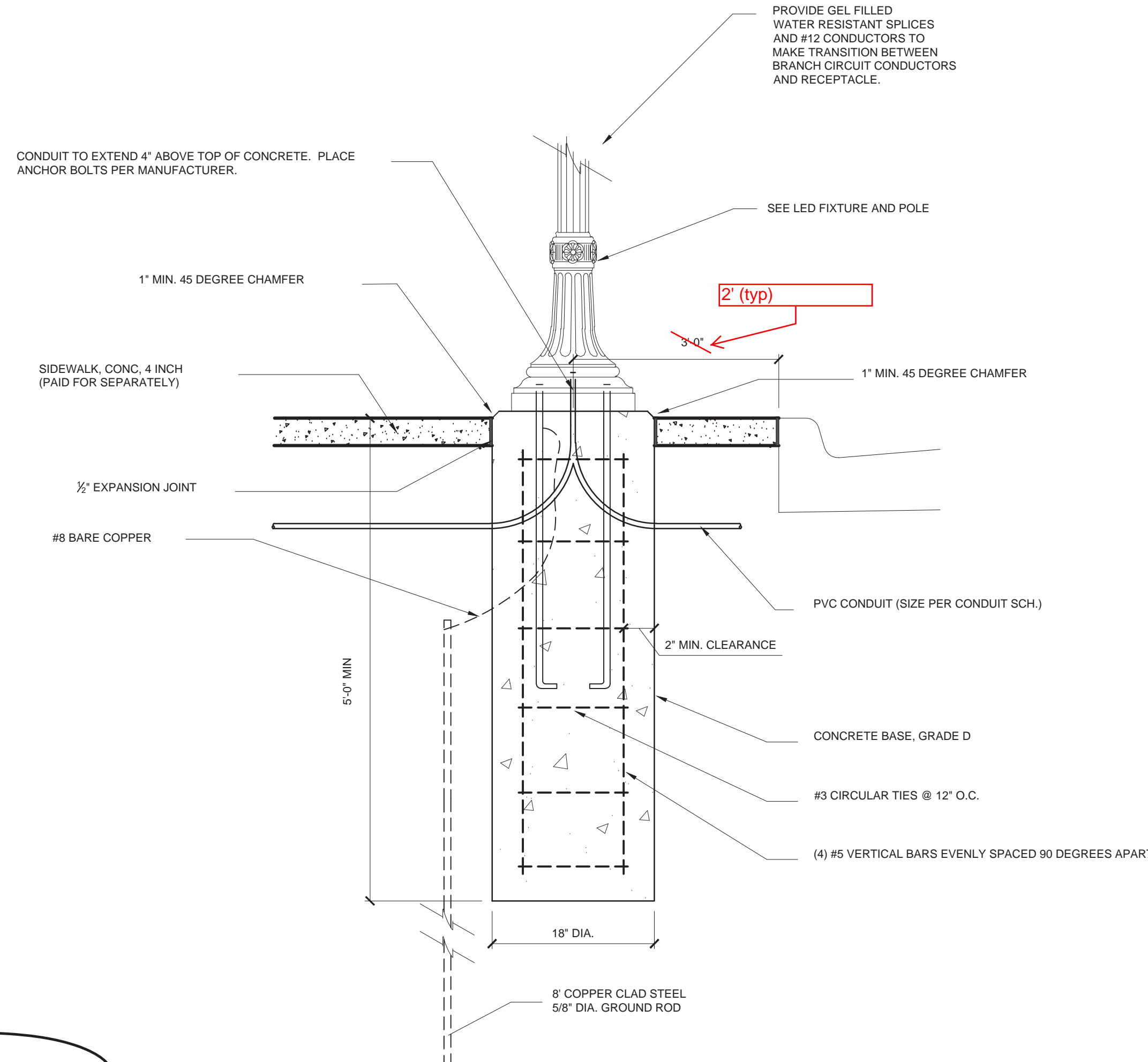


**LIGHT STD FDN**  
NOT TO SCALE



CONTRACTOR SHALL INSTALL TRASH RECEPTACLE LEVEL IN BOTH DIRECTIONS.

**TRASH RECEPTACLE**  
NOT TO SCALE



**BASIS OF DESIGN**  
MOUNT VERNON SERIES POLE  
Aluminum, Straight Smooth S4J Shaft  
Tenon: 823x21, Finish: Hologlance Black  
(1)GFI Receptacle with Wet Location Cover  
(1)Set 3/4"x18" Anchor Bolts

**Utility Washington Series Luminaire Full Cutoff LED2**  
LED Performance P40, 4000 Series CCT  
Multivoit 120-277, Finish: Black  
Full Cut Off type III  
Ball final, Painted Cast Aluminium

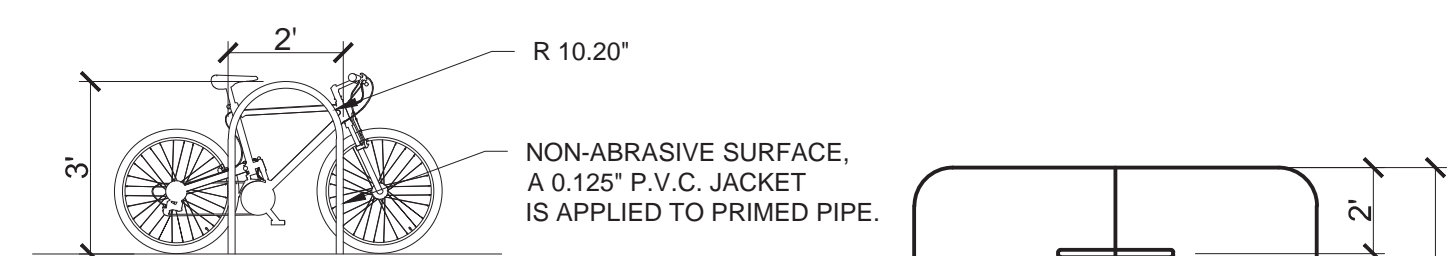
**LIGHT FIXTURE AND POLE SHALL BE FROM ONE OF THE FOLLOWING OR APPROVED EQUAL:**  
**HOLOPHANE LIGHTING**  
1200 CENTRAL AVE  
HANOVER PARK, IL 60106  
**SPRING CITY ELECTRICAL MFTG.**  
ONE SOUTH MAIN STREET  
SPRING CITY, PA 19475  
**SUN VALLEY LIGHTING**  
660 WEST AVE O  
PALMDALE, CA 93551

**Accessory Mounting Detail**

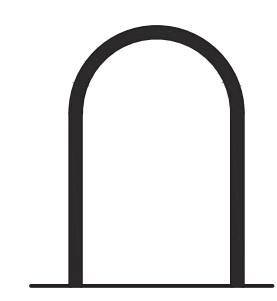
Receptacle	Orientation	Height
	0°	9'-0"

**Catalog #'s:**  
Pole: MVA 14 S4J 12D C03 BK ABG RP108A  
Anchor Bolts: AB-31-4  
Receptacle: FGIUS BK  
Fixture: WFCL2 P40 40K MVOLT FC3 BK BL

**LED FIXTURE AND POLE**  
NOT TO SCALE



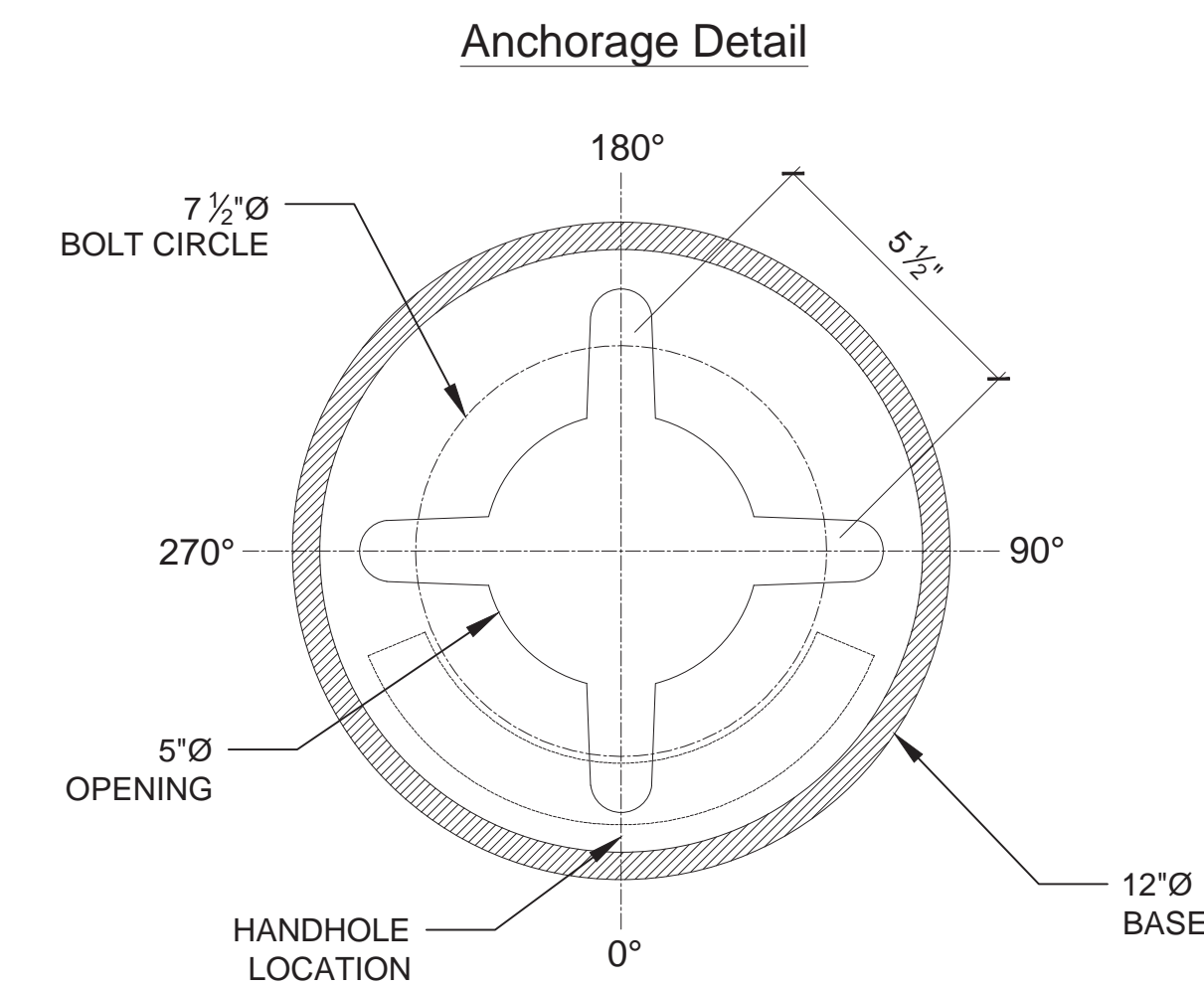
**ELEVATION/SECTION**



**U RACK**

**NOTES:**  
1. INSTALLATION TO BE COMPLETED IN ACCORDANCE WITH MANUFACTURER'S SPECIFICATIONS.  
2. SURFACE MOUNTED  
3. DO NOT SCALE DRAWINGS.

**BIKE LOOP**  
NOT TO SCALE



**Anchorage Detail**

Y:\Proj\845110-84511000\845110\_Alanson Tap C101.dwg - plotted on 7/7/2023 4:39 PM